

# COMFORT

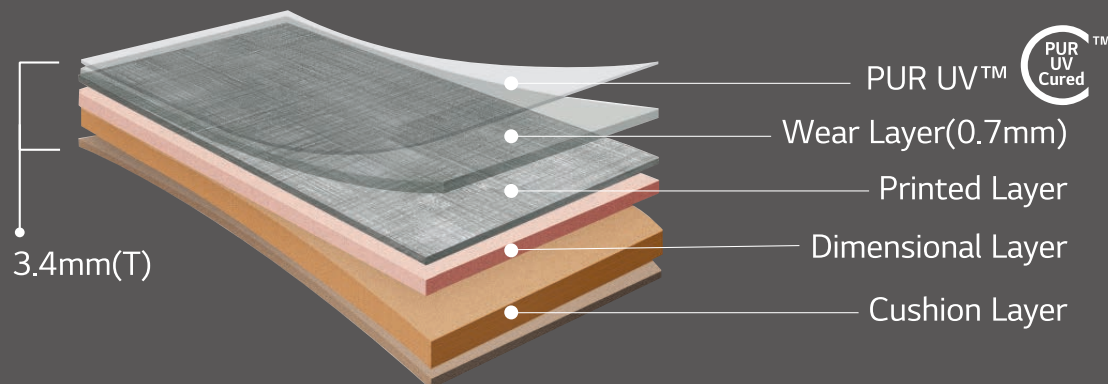
# COMFORT

keeps noise from stress



## 19dB

High-elasticity cushion layer reduces impact noise by 19dB (EN ISO 10140)





# COMFORT

keeps noise from stress

## Indentation



Residual indentation  
 $\leq 0.2\text{mm}$  (EN 433)

## Non Slip



Ramp Test **R10**  
(DIN51130)

## Fire Resistance



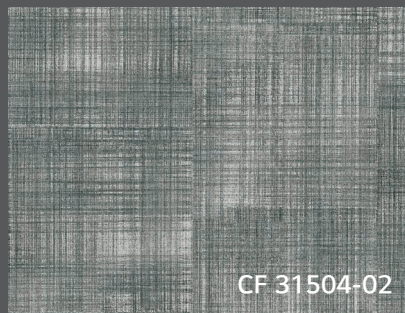
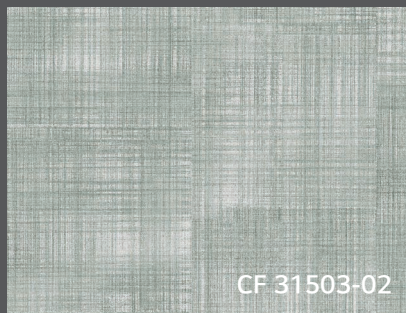
Reaction to Fire **Bfl-s1**  
(EN13501-1)



---

# COMFORT

## INDEX







# COMFORT



**CF28105-02**  
**WEL8105-01**  
Sand Beige



**CF28102-02**  
**WEL8102-01**  
Cloud Grey



**CF28117-02**  
**WEL8117-01**  
Cadet Blue





---

 **COMFORT**

**CF28105-02**  
**WEL8105-01**  
Sand Beige



**CF28102-02**  
**WEL8102-01**  
Cloud Grey



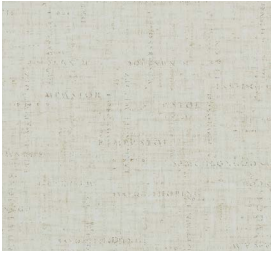
**CF28117-02**  
**WEL8117-01**  
Cadet Blue







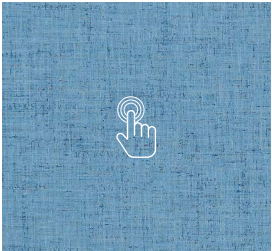
# COMFORT



**CF28105-02**  
**WEL8105-01**  
Sand Beige



**CF28102-02**  
**WEL8102-01**  
Cloud Grey



**CF28117-02**  
**WEL8117-01**  
Cadet Blue



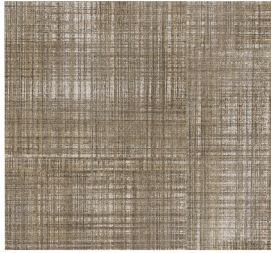




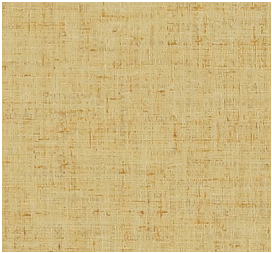
# COMFORT



**CF31507-02**  
**WEL2503-01**  
Spiced Almond



**CF31511-02**  
**WEL2505-01**  
Burnt Umber



**CF28113-02**  
Dandelion Yellow



**CF28114-02**  
Poppy Orange



**CF31515-02**  
Seaform Green



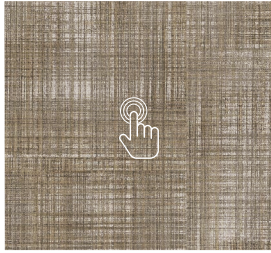




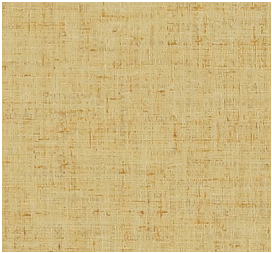
# COMFORT



**CF31507-02**  
**WEL2503-01**  
Spiced Almond



**CF31511-02**  
**WEL2505-01**  
Burnt Umber



**CF28113-02**  
Dandelion Yellow



**CF28114-02**  
Poppy Orange



**CF31515-02**  
Seaform Green



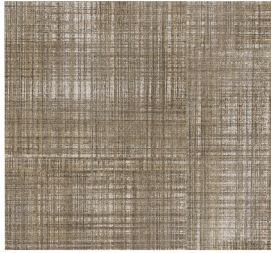




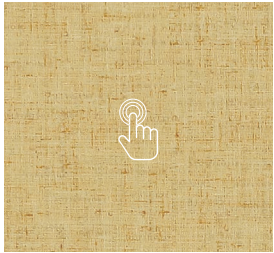
# COMFORT



**CF31507-02**  
**WEL2503-01**  
Spiced Almond



**CF31511-02**  
**WEL2505-01**  
Burnt Umber



**CF28113-02**  
Dandelion Yellow



**CF28114-02**  
Poppy Orange



**CF31515-02**  
Seaform Green



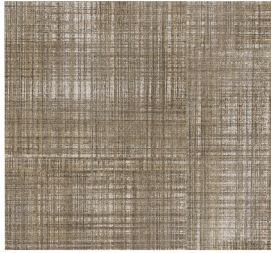




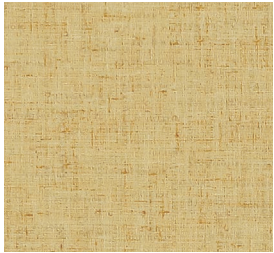
# COMFORT



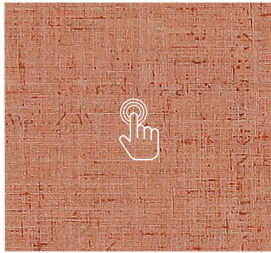
**CF31507-02**  
**WEL2503-01**  
Spiced Almond



**CF31511-02**  
**WEL2505-01**  
Burnt Umber



**CF28113-02**  
Dandelion Yellow



**CF28114-02**  
Poppy Orange



**CF31515-02**  
Seaform Green



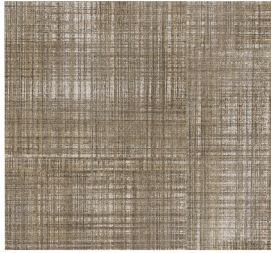




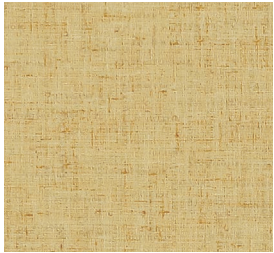
# COMFORT



**CF31507-02**  
**WEL2503-01**  
Spiced Almond



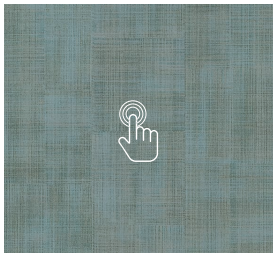
**CF31511-02**  
**WEL2505-01**  
Burnt Umber



**CF28113-02**  
Dandelion Yellow



**CF28114-02**  
Poppy Orange



**CF31515-02**  
Seaform Green





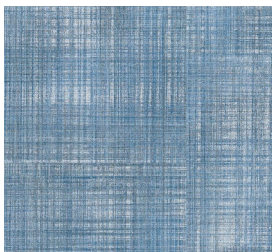
 **COMFORT**



**CF31503-02**  
**WEL2012-03**  
Meadow Grey



**CF31511-02**  
**WEL2505-01**  
Burnt Umber



**CF31513-02**  
**WEL5009-01**  
Lake Blue



**CF32402-02**  
**WEL8002-01**  
Warm Camel



**CF32404-02**  
**WE93402-01**  
Golden Sesame





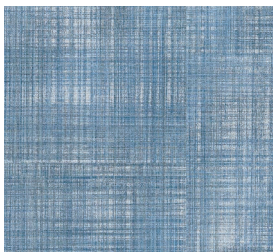
 **COMFORT**



**CF31503-02**  
**WEL2012-03**  
Meadow Grey



**CF31511-02**  
**WEL2505-01**  
Burnt Umber



**CF31513-02**  
**WEL5009-01**  
Lake Blue



**CF32402-02**  
**WEL8002-01**  
Warm Camel



**CF32404-02**  
**WE93402-01**  
Golden Sesame





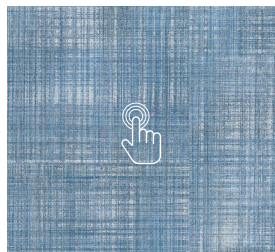
 **COMFORT**



**CF31503-02**  
**WEL2012-03**  
Meadow Grey



**CF31511-02**  
**WEL2505-01**  
Burnt Umber



**CF31513-02**  
**WEL5009-01**  
Lake Blue



**CF32402-02**  
**WEL8002-01**  
Warm Camel



**CF32404-02**  
**WE93402-01**  
Golden Sesame





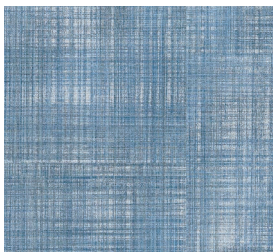
 **COMFORT**



**CF31503-02**  
**WEL2012-03**  
Meadow Grey



**CF31511-02**  
**WEL2505-01**  
Burnt Umber



**CF31513-02**  
**WEL5009-01**  
Lake Blue



**CF32402-02**  
**WEL8002-01**  
Warm Camel



**CF32404-02**  
**WE93402-01**  
Golden Sesame







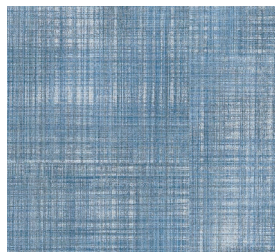
# COMFORT



**CF31503-02**  
**WEL2012-03**  
Meadow Grey



**CF31511-02**  
**WEL2505-01**  
Burnt Umber



**CF31513-02**  
**WEL5009-01**  
Lake Blue



**CF32402-02**  
**WEL8002-01**  
Warm Camel



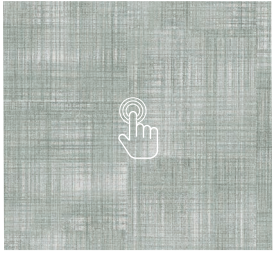
**CF32404-02**  
**WE93402-01**  
Golden Sesame



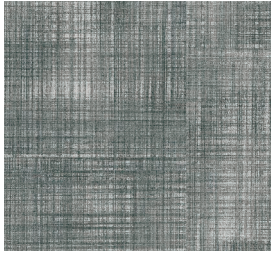




# COMFORT



**CF31503-02**  
**WEL2012-03**  
Meadow Grey



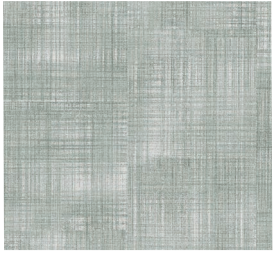
**CF31504-02**  
**WELSD07-01**  
Charcoal Grey



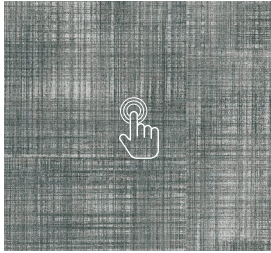




# COMFORT



**CF31503-02**  
**WEL2012-03**  
Meadow Grey



**CF31504-02**  
**WELSD07-01**  
Charcoal Grey





# COMFORT

Type of Flooring	Heterogeneous acoustic sheet		
Total thickness	3.4mm	Wear Layer	0.7mm
Width	2M	Length	20M/Roll
Weight	2,950 g/m <sup>2</sup>	Colors	10 C



## TECHNICAL DATA

CHARACTERISTICS	STANDARD	UNIT	RESULT
Surface Treatment			PUR UV™
Format			Sheet
Classification	ISO 10582		34/42
Roll Length		m	20
Width	ISO 24341(EN 426)	mm	2,000
Overall Thickness	ISO 24346(EN 428)	mm	3.4
Weight	ISO 23997(EN 430)	g/m <sup>2</sup>	3,050
Thickness of wear layer	ISO 24340(EN 429)	mm	0.7
Wear Resistance	EN 660-2		Wear Group T
Color fastness to light	ISO105-B02		≥6
Dimensional Stability	ISO 23999(EN 434)	%	Fulfilled
Slip resistance	DIN 51130 / EN 13893		R10 / DS
Reaction to fire	EN 13501-1		Bfl-s1
Static electrical Propensity	EN 1815	kv	< 2
Chemical resistance	ISO 26987(EN 423)		High Resistance
Castor chair suitability	ISO 4918(EN 425)		No Damage
Furniture Leg	EN 424		No Damage
Impact sound insulation	EN ISO 10140	Δ dB	19
TVOC after 28days	ISO 16000-6	μg/m <sup>3</sup>	<100
Formaldehyde Group(Indoor Air Quality)	EN 717-1		E1

## KEY FEATURES

### Sound Reduction

High-elasticity cushion layer reduces impact noise (EN ISO 10140)

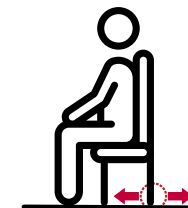
**Δ 19dB**



### Indentation

Residual indentation (EN 433)

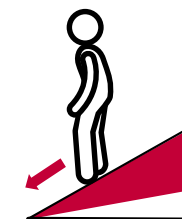
**≤0.2mm**



### Non Slip

Ramp Test (DIN51130)

**R10**



### Fire Resistance

Reaction to Fire (EN13501-1)

**Bfl-S1**







**COMFORT**

---



[www.lxhausys.com](http://www.lxhausys.com)

For more information, Go to Website

 **LX Hausys**

Copyright © LX Hausys All rights reserved.