



ABC

Colorful environment

ABC

“In a learning environment, color is believed to be able to cause positive or negative behavior such as avoidance or withdrawal; therefore, affecting performance and stimulating sense.”



**KINDERGARTEN/
ELEMENTARY
SCHOOL**



**MIDDLE/HIGH
SCHOOL**



COLLEGE

Accepted Colors



→ Orange Spectrum/Violet Accent

- Reduces tensions, nervousness and anxiety
- Encourages a fun/friendly environment

Accepted Colors



→ Blue Spectrum/Orange Accent

- Helps balance hormones and has a calming nature to help students focus on learning
- Need vibrant warm accent colors to create lively spaces

Accepted Colors



→ Neutral Spectrum

- Promotes a serene environment that enhances quietness and concentration
- Helps maintain attention without any overstimulation

Alphabet

AB28102-01

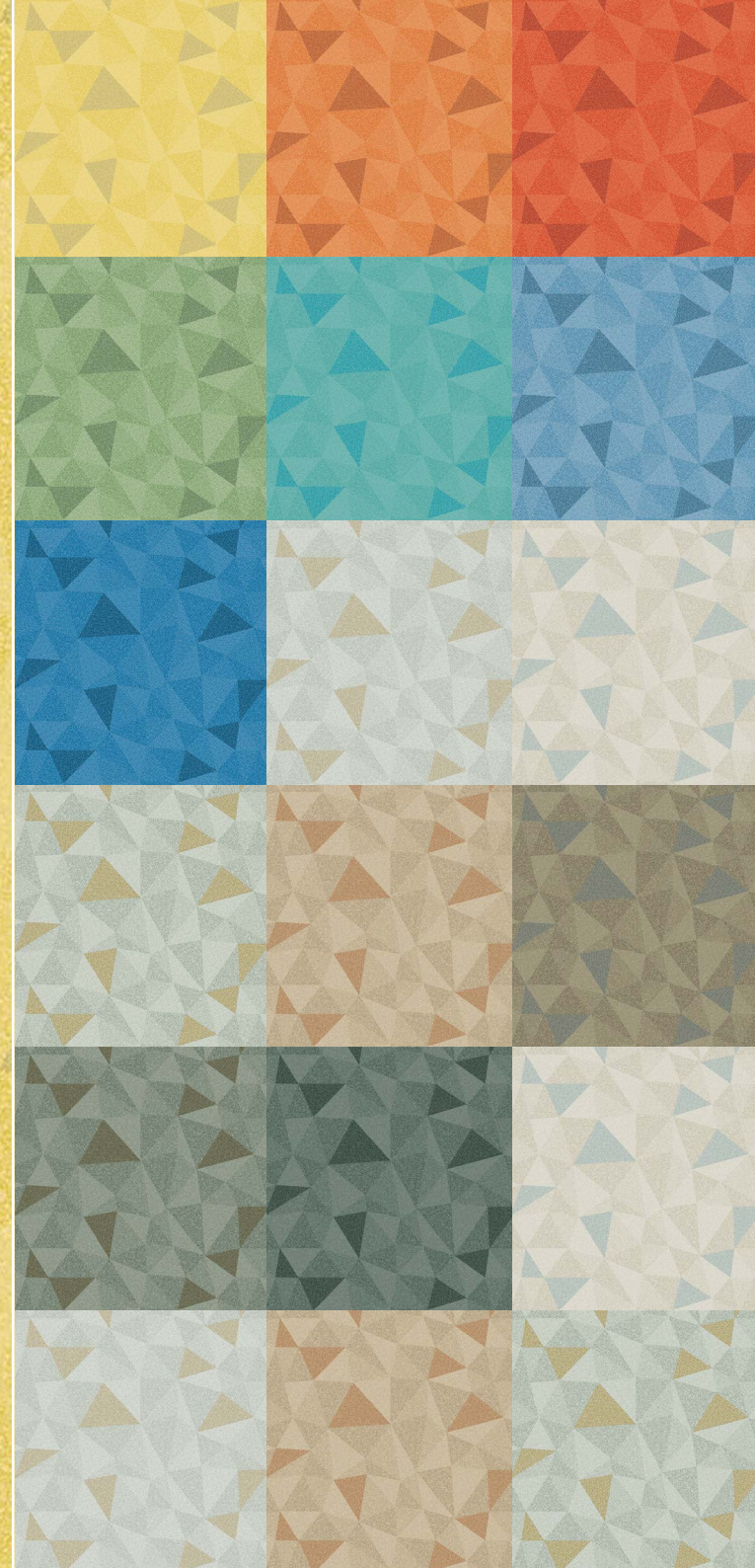
Fabric texture creates a soft atmosphere



Puzzle Bloom

AB28610-01

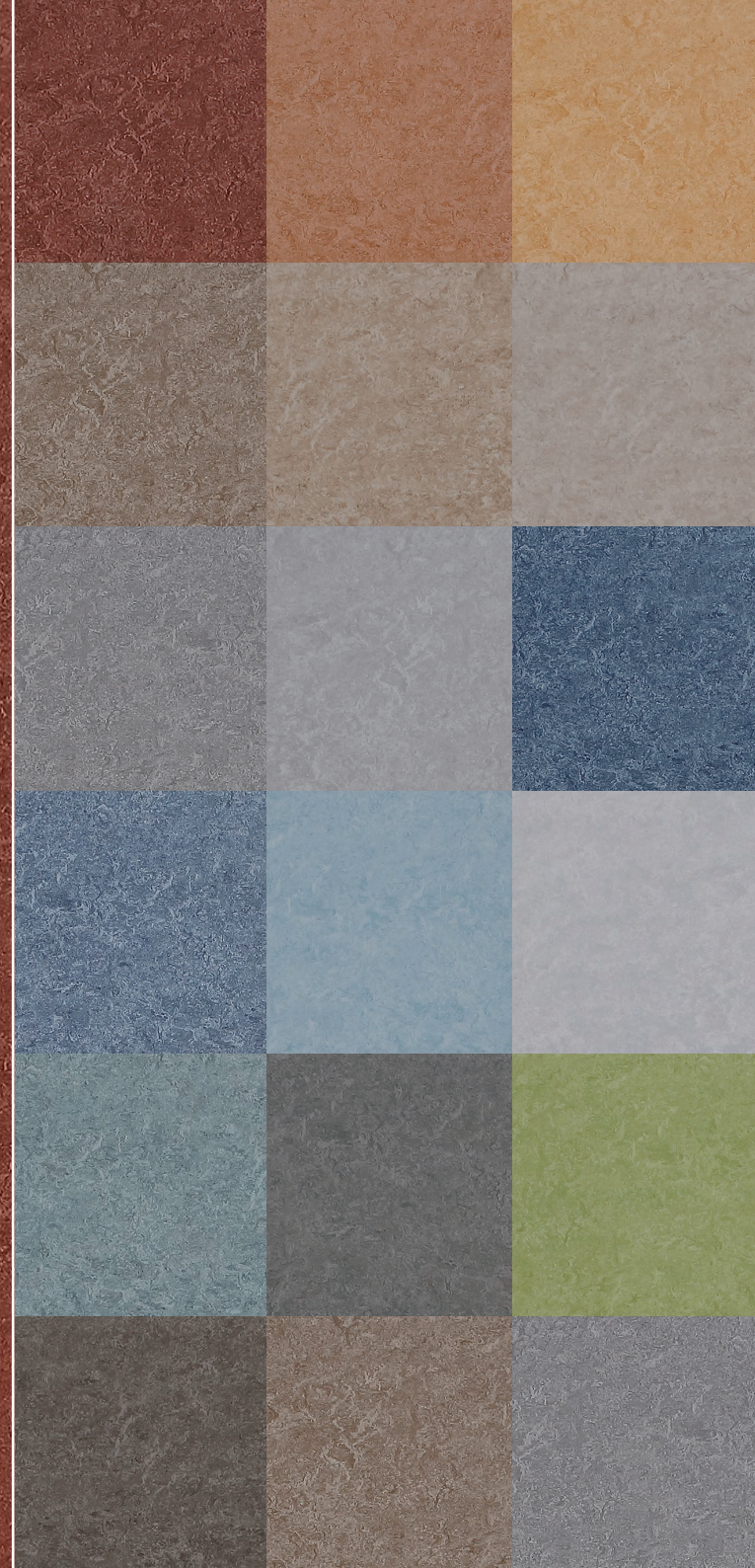
A dynamic puzzle shape creates a cheerful feeling



Marmo marble

AB34616-01

Natural Stone texture is a pattern with a calm feeling of solid color.



ALPHABET

AB 28110-01



AB 28116-01

AB 28117-01

AB 28109-01



ALPHABET

AB 28110-01

AB 28116-01

AB 28117-01

AB 28109-01



ALPHABET

AB 28110-01

AB 28116-01

AB 28117-01

AB 28109-01



ALPHABET

AB 28110-01

AB 28116-01

AB 28117-01

AB 28109-01



PUZZLE BLOOM

AB 28601-01



AB 28604-01

AB 28602-01



PUZZLE BLOOM

AB 28601-01

AB 28604-01

AB 28602-01



PUZZLE BLOOM

AB 28601-01

AB 28604-01

AB 28602-01



PUZZLE BLOOM

AB 28610-01



AB 28611-01

AB 28613-01



PUZZLE BLOOM

AB 28610-01

AB 28611-01

AB 28613-01



PUZZLE BLOOM

AB 28610-01

AB 28611-01

AB 28613-01



MARMO MARBLE



AB 34606-01

AB 34614-01

AB 34607-01

AB 34615-01

AB 28611-01

AB 34603-01



MARMO MARBLE

AB 34606-01

AB 34614-01

AB 34607-01



AB 34615-01

AB 28611-01

AB 34603-01



MARMO MARBLE

AB 34606-01

AB 34614-01

AB 34607-01

AB 34615-01

AB 28611-01

AB 34603-01



Strong Resistance to Scratch

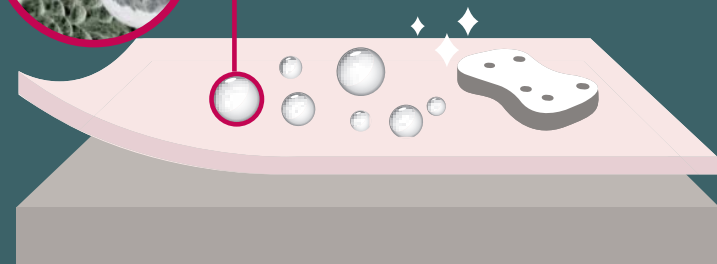
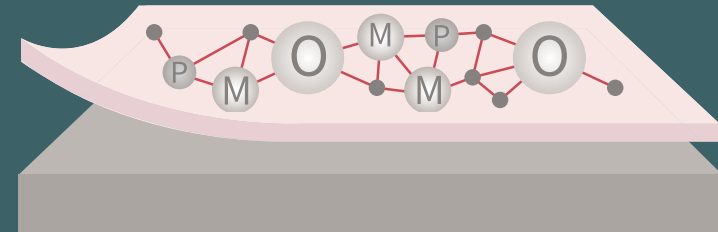
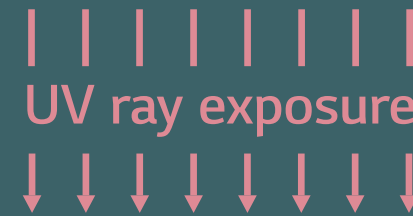
Not easily worn out against heavy traffic
Wear resistance group T(EN 660-2)



Wear resistance group T

Easy Maintenance Easy Clean UV™

Easy Clean UV™ allows easy maintenance
Low maintenance cost



Commercial Sheet ABC

Type of Flooring	Heterogeneous commercial sheet		
Total thickness	2.0mm	Wear Layer	0.55mm
Width	2M	Length	20M/Roll
Weight	3,000g/m ²	Colors	48 C



TECHNICAL DATA

Characteristic	Standard	Unit	ABC
Surface Treatment			
Format			Sheet
Classification	ISO 10874(EN 685)		33/42
Roll length		M	20
Width	ISO 24341(EN 426)	mm	2,000
Thickness	ISO 24346(EN 428)	mm	2
Weight	ISO 23997(EN 430)	g/m ²	3,000
Wear layer thickness	ISO 24340(EN 429)	mm	0.55mm
Residual indentation	ISO 24343-1(EN 433)	mm	< 0.1
Dimensional stability	ISO 23999(EN 434)	%	< 0.4
Color fastness to light	ISO 105-B02		≥ 6
Wear class	EN 660-2		T
Castor chair test	ISO 4918(EN 425)		Fulfilled
Reaction to fire	EN 13501-1		Bfl-s1
Chemical resistance	ISO 26987(EN 423)		Good
Slip resistance	EN 13893		DS
	DIN 51130		R9
Impact sound reduction	EN ISO 10140	dB	
Flexibility	ISO 24344(EN 435)		No crack
Body voltage	EN 1815	kV	< 2
Thermal resistance	EN 12664	m ² K/W	suitable for underfloor heating

Features



Strong resistance to scratch

- Not easily worn out against heavy traffic
- Wear resistance group T(EN 660-2)



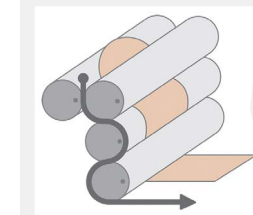
Easy Maintenance

- Easy Clean UV™ allows easy maintenance
- Low maintenance cost



ITEM		ABC	OTHERS
80°C	L	+0.05%	-0.2%
OvenX1hr	W	-0.10%	-0.30%

Superior dimensional stability with Glass paper inlaid structure



· Dimensional stabilities due to optimized temperature & tension technology applied on the Calendering process of LX Hausys.

· Dimensionally unstable products may result in gaps between sheets after installation. These gaps could trap dirt and multiply bacteria.



ABC



www.lxhausys.com

For more information, Go to Website

 LX Hausys

Copyright © LX Hausys All rights reserved.