

H·FLOR

Natural Selection Plus

Modern · Wood | Heterogeneous Sheet

H·FLOR

Natural Selection Plus

LX Hausys is one of the world's leading providers of building and decorative materials. For more than 70 years, we've been producing high performance flooring products using the latest advanced manufacturing techniques to create eco-conscious and human-friendly resilient flooring solutions.

Whether you prefer a more traditional aesthetic or a contemporary look, Natural Selection Plus Collection offers a variety of designs engineered with precision to suit your space.

Modern



Wood

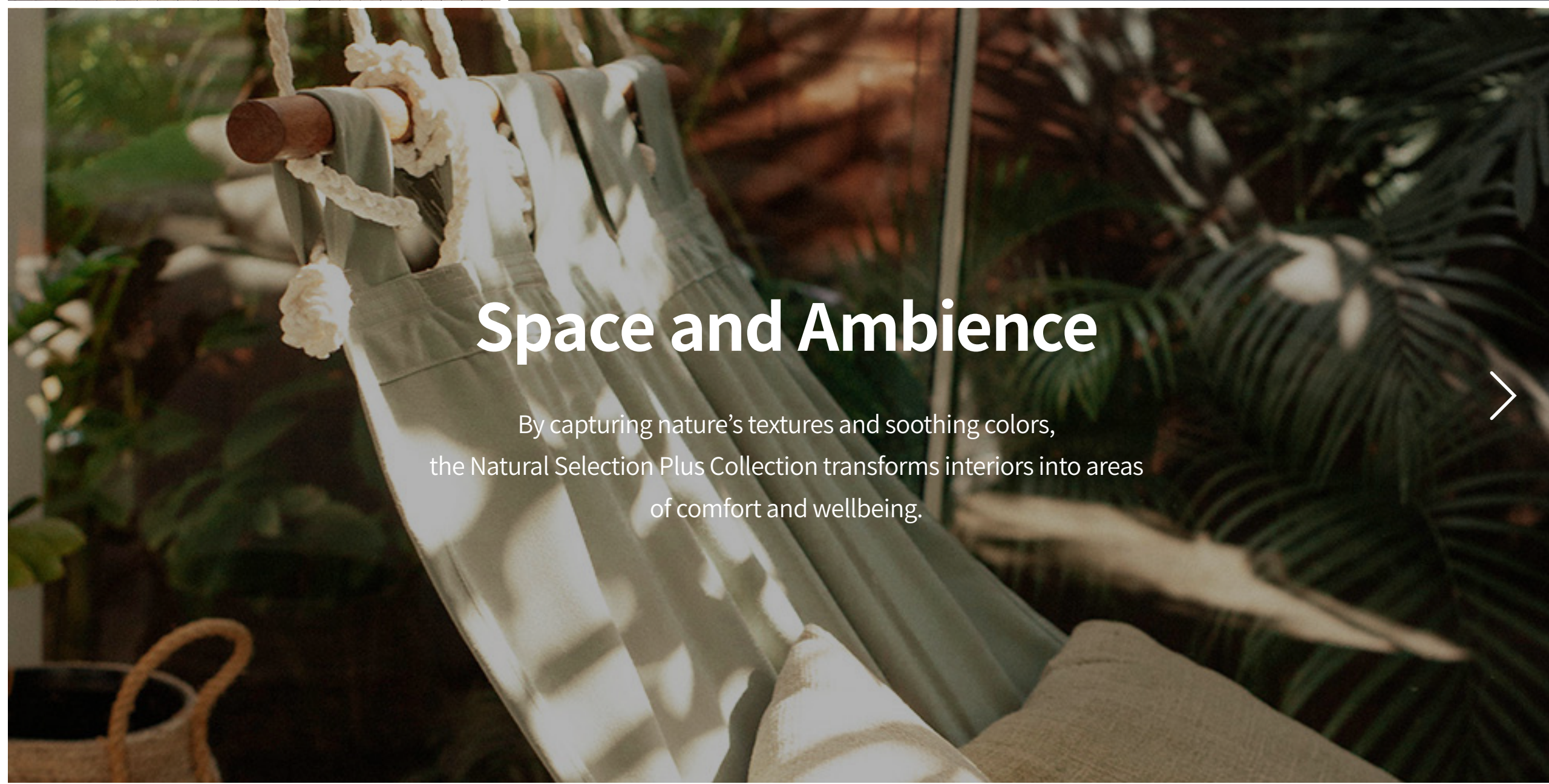


Natural Selection Plus

HFLOR's Natural Selection Plus is inspired by the beautiful, restorative and healthy benefits found in nature.

Space and Ambience

By capturing nature's textures and soothing colors, the Natural Selection Plus Collection transforms interiors into areas of comfort and wellbeing.



Natural Selection Plus

Product Configuration

- Modern
- Wood

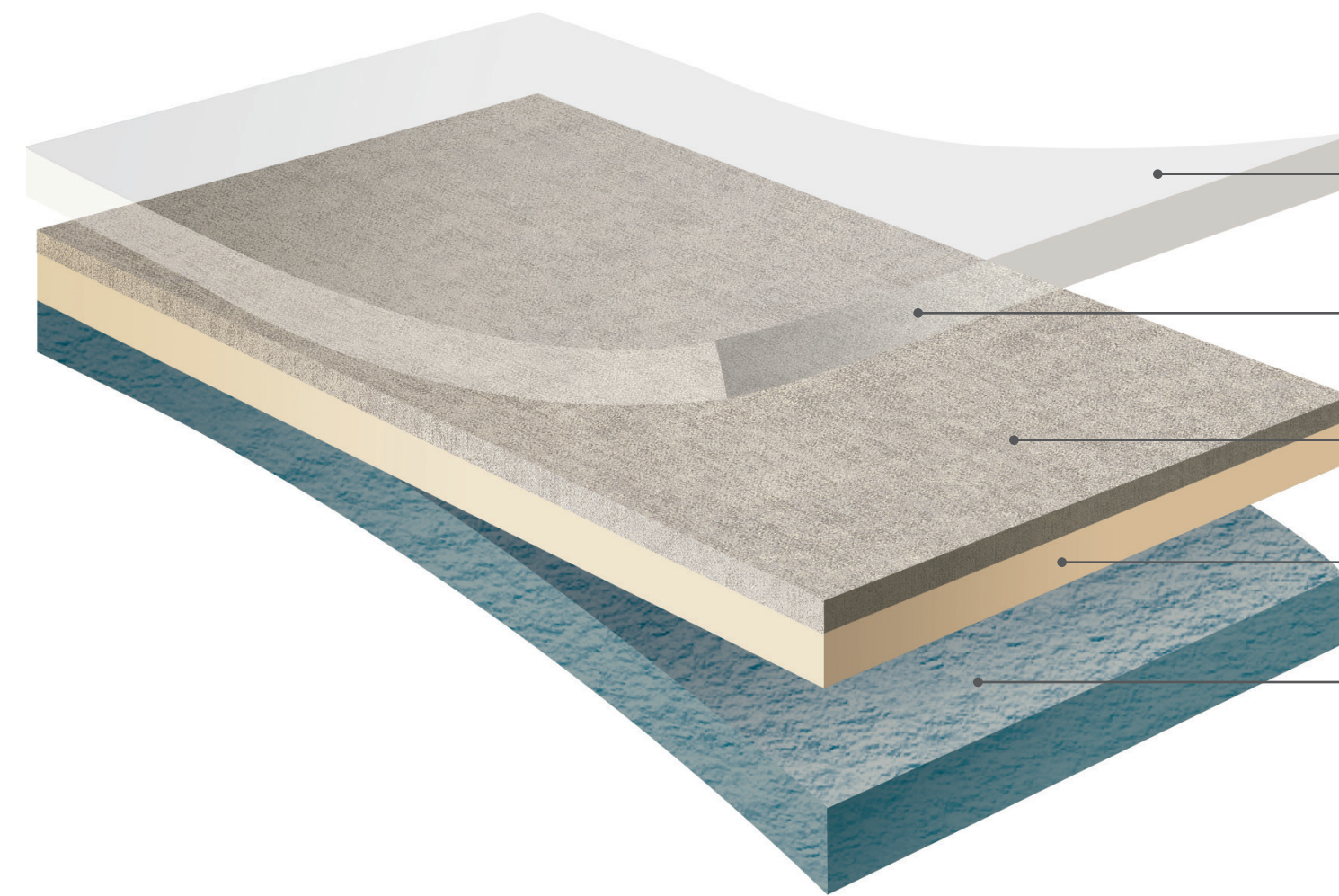
Applications

Production Method & Installation

Features & Benefits

- Durability
- Low Maintenance
- Hygiene

Modern



PUR Easy Clean UV

Wear Layer

Printed Layer

Dimensional Layer

Compact Layer

Thickness	2 mm (0.0787")
Wear Layer	28 mil (0.7 mm)
Width	78"/6'6" (2.0m)
Length	68' (20.9m)
Colors	15



Natural Selection Plus

Product Configuration

- Modern
- **Wood**

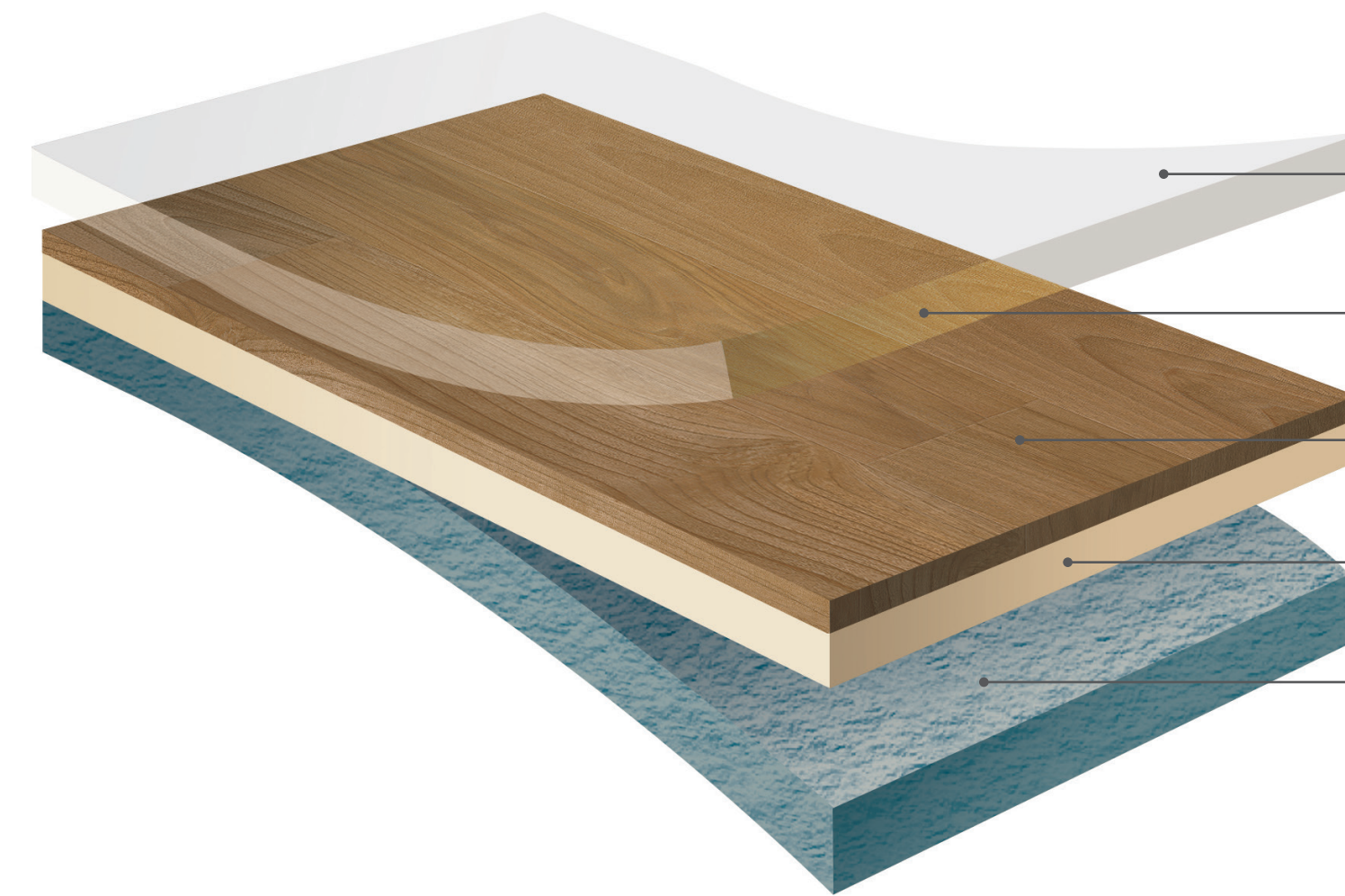
Applications

Production Method & Installation

Features & Benefits

- Durability
- Low Maintenance
- Hygiene

Wood



PUR Easy Clean UV

Wear Layer

Printed Layer

Dimensional Layer

Compact Layer

Thickness 2 mm (0.0787")

Wear Layer 28 mil (0.7 mm)

Width 78"/6'6" (2.0m)

Length 68' (20.9m)

Colors 15



Natural Selection Plus

| Product Configuration

- Modern
- Wood

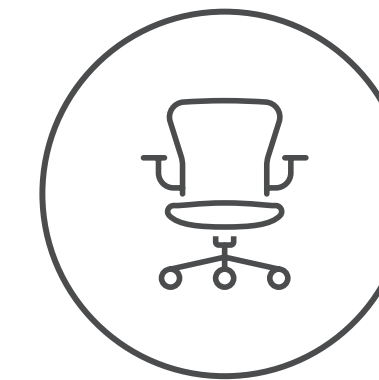
| Applications



Healthcare



Education



Office



Hospitality

| Production Method & Installation

| Features & Benefits

- Durability
- Low Maintenance
- Hygiene



NAP4172 | Linen



NAP4186 | Fumed Walnut

Natural Selection Plus

| Product Configuration

- Modern
- Wood

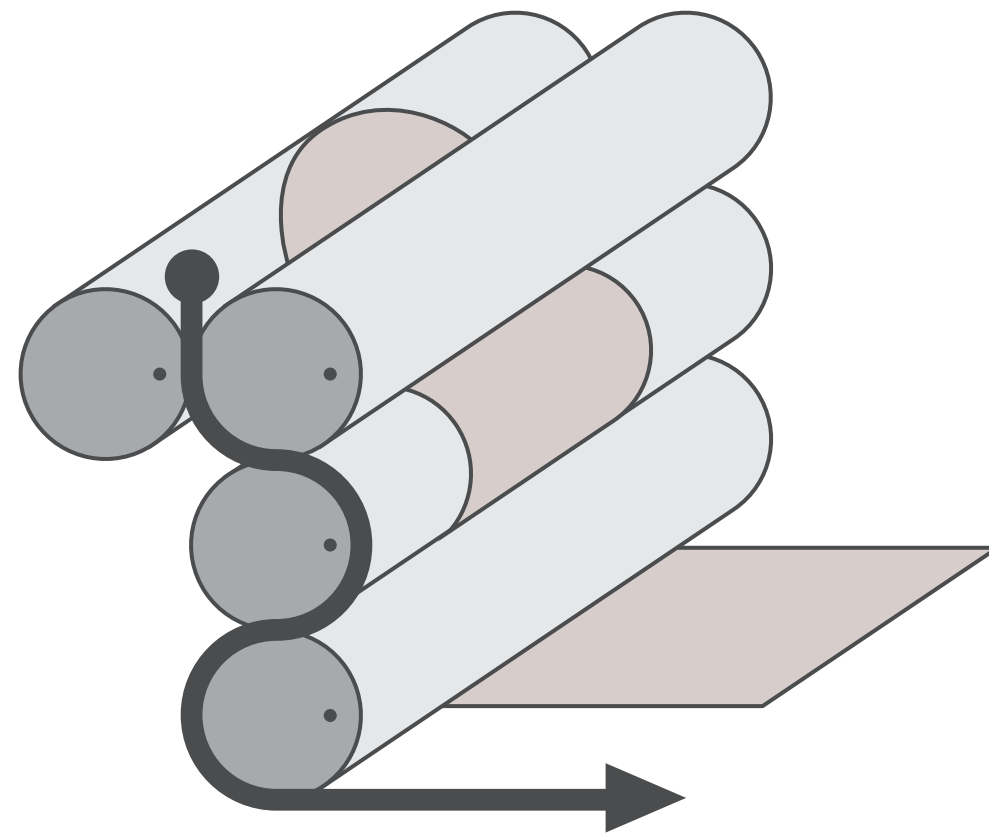
| Applications

| Production Method & Installation

| Features & Benefits

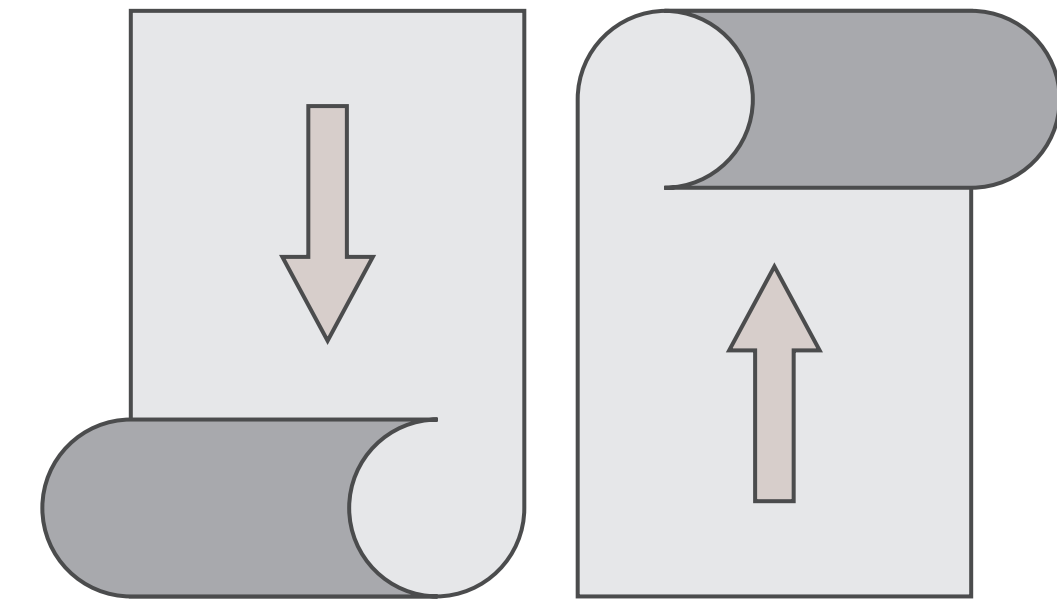
- Durability
- Low Maintenance
- Hygiene

Production Method



Our advanced Calendering process creates dimensional stabilities, helping to eliminate unwanted gaps between sheets after installation, which can trap dirt and create conditions for bacterial growth.

Installation



Please follow the HFLOR (Heterogeneous Sheet) Installation Guide. Visit the website for details.



Natural Selection Plus

| Product Configuration

- Modern
- Wood

| Applications

| Production Method & Installation

| Features & Benefits

- **Durability**
- Low Maintenance
- Hygiene

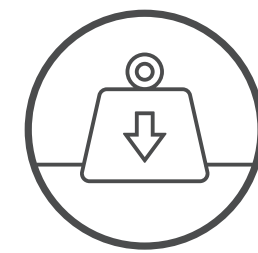
01. Durability

A 28 mil (0.7 mm) thick wear layer guarantees outstanding durability that stands up to everyday wear and tear, making the Natural Selection Plus Collection the ideal solution for heavy-traffic areas.



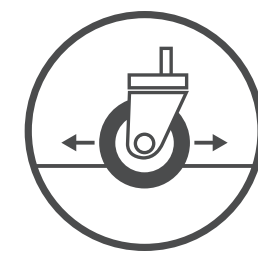
Wear Layer

28 mil (0.7 mm) wear layer ensures durability, ideally suited for high-traffic commercial applications.



Static Load

Featuring high indentation resistance in accordance with ASTM F970 testing standards.



Dynamic Rolling Load

Withstands 25,000 cycles of rolling loads, resulting in no exposure of wear layer in accordance with ASTM F2753.



NAP4171 | Cotton

Natural Selection Plus

| Product Configuration

- Modern
- Wood

| Applications

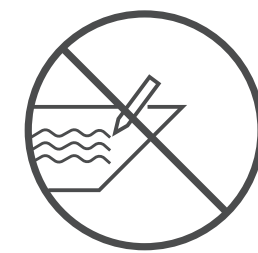
| Production Method & Installation

| Features & Benefits

- Durability
- **Low Maintenance**
- Hygiene

02. Low Maintenance

HFLOR's special surface treatment technology ensures easy maintenance and eliminates the need for waxing and polishing. It also improves resistance to scratches and stains to protect the floor patterns so they last longer.



Micro-Scratch Resistance

High resistance to scratches ensures the surface lasts longer in accordance with EN 16094 testing standards.



No Waxing & Polishing

Special surface coating technology eliminates the need for waxing and polishing, reducing high maintenance expenses.



Ease of Cleaning

Unique surface treatment technology prevents outer contaminants from penetrating the surface and is easy to clean thanks to its Lotus Effect Mechanism.



Natural Selection Plus

Product Configuration

- Modern
- Wood

Applications

Production Method & Installation

Features & Benefits

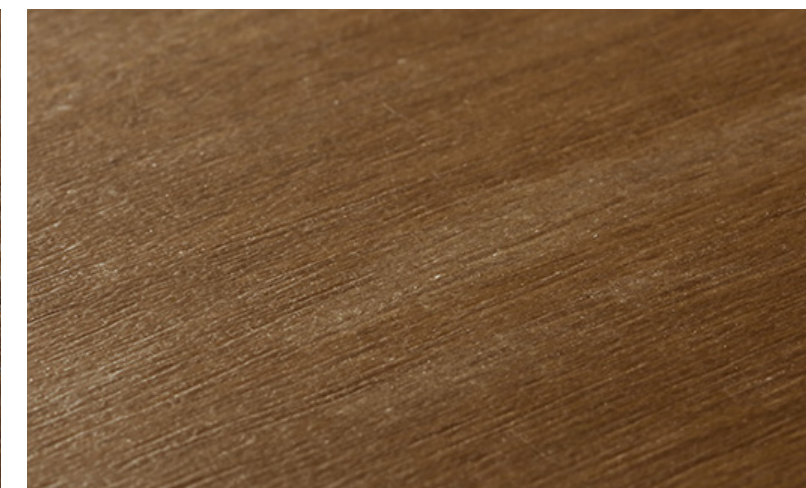
- Durability
- **Low Maintenance**
- Hygiene

02. Low Maintenance

HFLOR's special surface treatment technology ensures easy maintenance and eliminates the need for waxing and polishing. It also improves resistance to scratches and stains to protect the floor patterns so they last longer.



Regular Sheet : B4

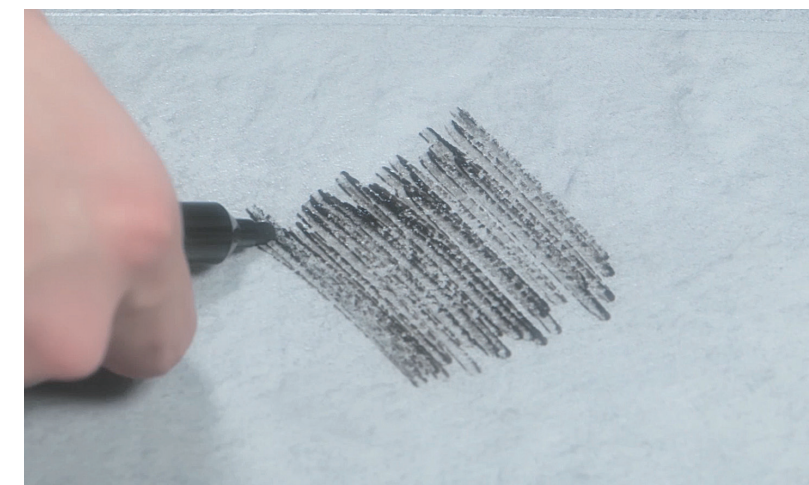


Natural Selection Plus : B2

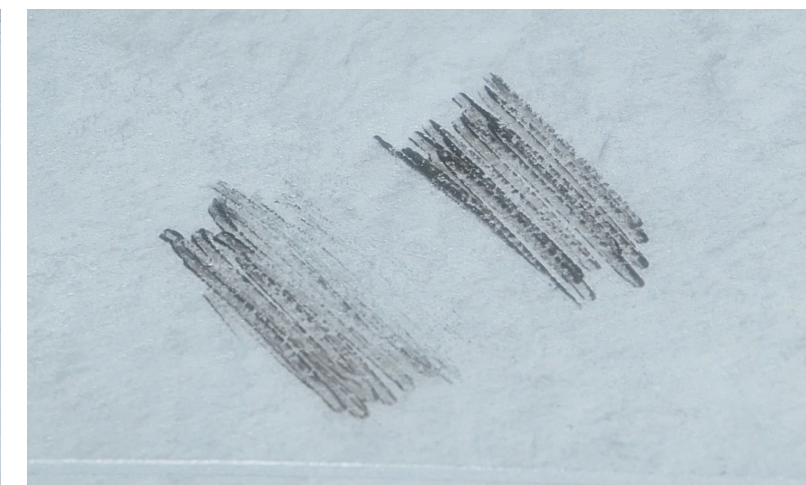
Martindale Test (EN16094)

Tested with 160 rotations on the product with a strength of 4N with a scratch pad. (Scotch-Bright pad #7440)

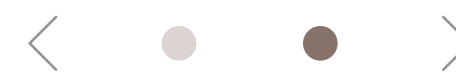
B1 = No scratches, B2 = Only few scratches, B3 = Moderate, B4 = Many scratches, B5 = Complex scratches in every direction



Without Easy Clean UV



Natural Selection Plus



Natural Selection Plus

| Product Configuration

- Modern
- Wood

| Applications

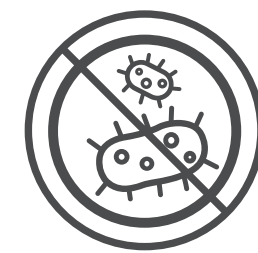
| Production Method & Installation

| Features & Benefits

- Durability
- Low Maintenance
- **Hygiene**

03. Hygiene

Natural Selection Plus offers hygienic properties as it is manufactured to prevent bacteria and mold from penetrating its surface. Easy to clean, it is ideal for use in hospitals, medical facilities, laboratories and other spaces where hygiene is essential.



Anti-Fungal

Enhanced technology prevents the growth of fungi to provide a more hygienic environment in accordance with ASTM G21.



Anti-Bacterial

Superior resistance to outer contaminants and bacteria thanks to its specially treated PUR coating in accordance with AATCC 147.



Natural Selection Plus

| Product Configuration

- Modern
- Wood

| Applications

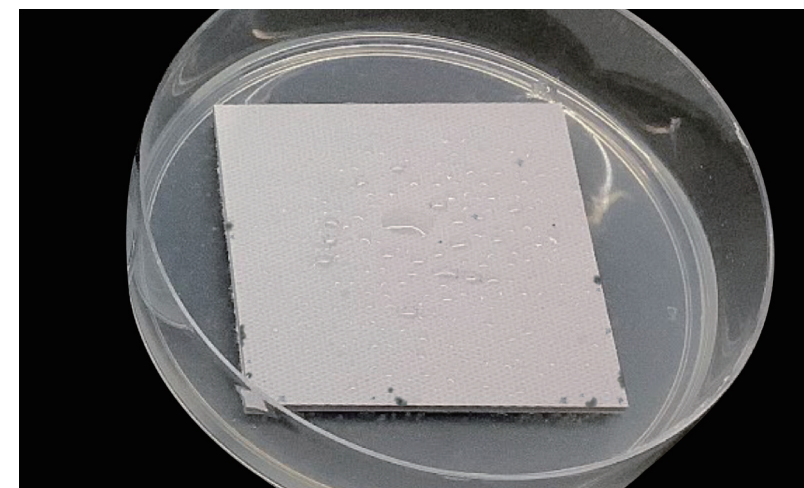
| Production Method & Installation

| Features & Benefits

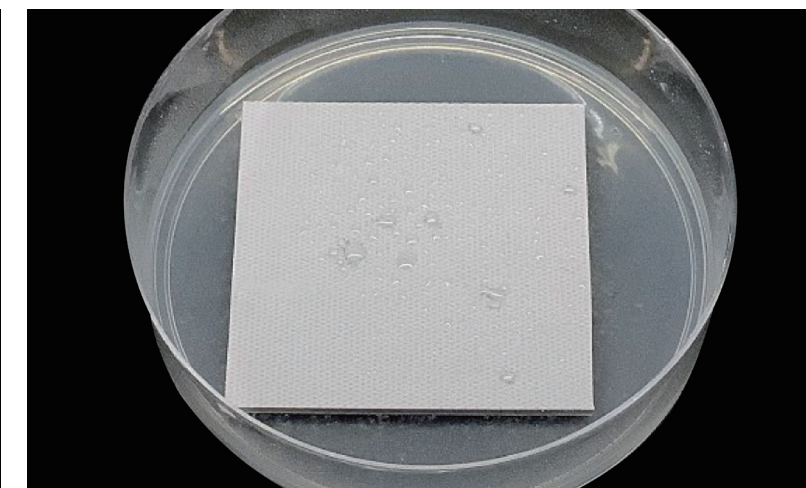
- Durability
- Low Maintenance
- **Hygiene**

03. Hygiene

Natural Selection Plus offers hygienic properties as it is manufactured to prevent bacteria and mold from penetrating its surface. Easy to clean, it is ideal for use in hospitals, medical facilities, laboratories and other spaces where hygiene is essential.



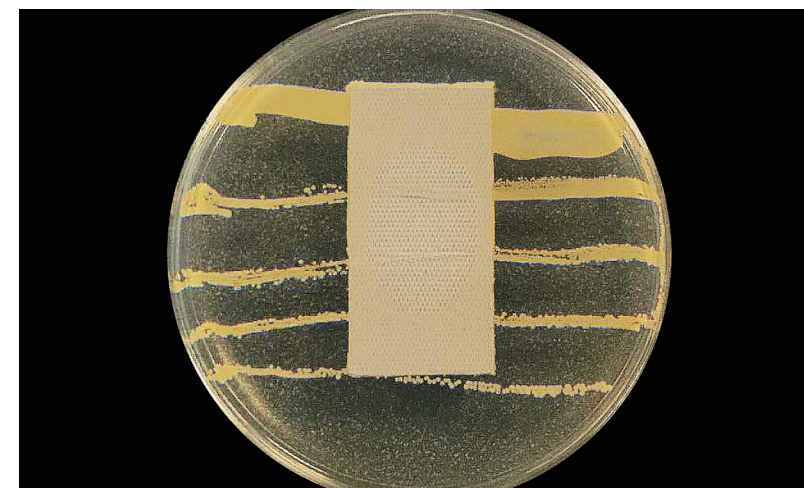
Without Anti-Fungal Technology



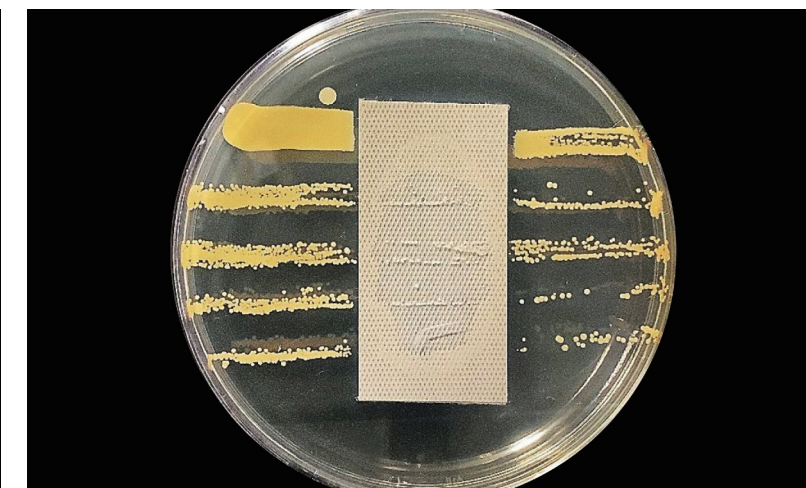
Natural Selection Plus

Anti-Fungal Test (ASTM G21)

This test evaluates mold resistance properties. Samples were examined once a week for a four-week period.



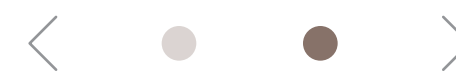
Without Anti-Bacterial Technology



Natural Selection Plus

Anti-Bacterial Test (AATCC 147)

This qualitative test demonstrates anti-bacterial activity by visually showing the boundaries of bacterial growth around the sample.

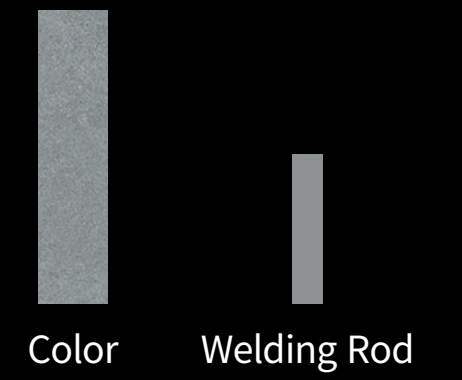


Natural Selection Plus

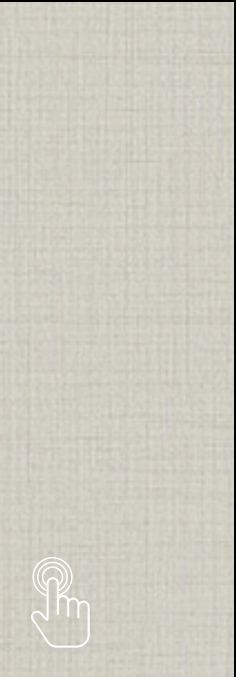


MODERN

WOOD

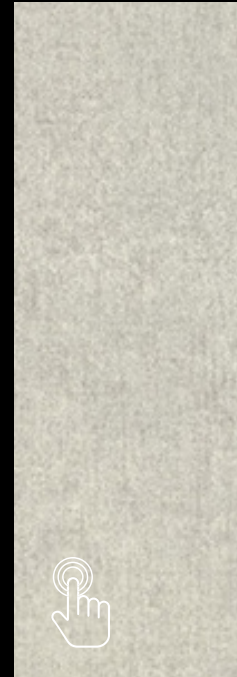




INDEX | Modern









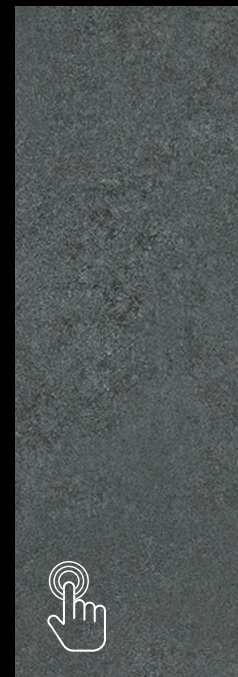
Textile Grid

 WEL5012-01	 WEL6206-01	 WEL3004-01
NAP4171 Cotton	NAP4172 Linen	NAP4173 Tatami

Textile Concrete

 WEL5012-01	 WEL1831-01	 WEL3203-01	 WEL1204-01	 WEL2013-01
NAP416A Stucco	NAP416B Portobello	NAP416C Moon	NAP416D Slate Gray	NAP416E Truffle

Concrete

 WEL2012-01	 WER6303-01	 WEL4205-01	 WEL7332-01	 WEL6051-01	 WEL3203-01	 WEL2014-01
NAP4174 Tweed	NAP4175 Gray Felt	NAP4161 Mist	NAP4162 Ivory Dust	NAP4163 Sand Beige	NAP4164 Taupe	NAP4165 Anthracite

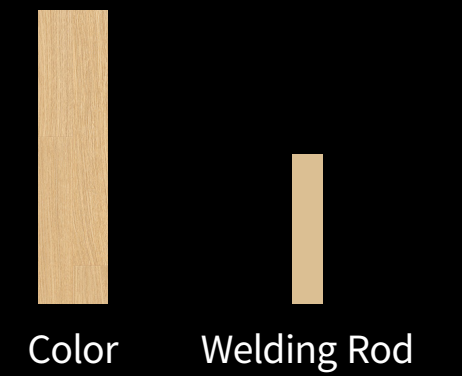
※ Printed representation of colors may vary from actual product. Please view the actual product prior to purchase. ※ Use matching welding rod for installation.

Natural Selection Plus

MODERN

WOOD

INDEX | Wood



European Walnut



NAP4181 Honey Walnut
 NAP4182 Natural Walnut
 NAP4183 Traditional Walnut

Golden Oak



NAP4191 Blonde Oak
 NAP4192 Bleached Oak
 NAP4193 Fine Oak
 AP4194 Farmhouse Oak
 NAP4195 Smoked Oak

Natural Ash



NAP4184 Fawn Walnut
 NAP4185 Toasted Walnut
 NAP4186 Fumed Walnut
 NAP4201 Limed Ash
 NAP4202 Oiled Ash
 NAP4203 Champagne Ash
 NAP4204 Oyster Ash

※ Printed representation of colors may vary from actual product. Please view the actual product prior to purchase. ※ Use matching welding rod for installation.

Textile Grid

NAP4171 Cotton

Full repeat (L x W)
49.21" (1,250 mm) x 78.75" (2,000 mm)



Textile Grid

NAP4172 *Linen*

Full repeat (L x W)
49.21" (1,250 mm) x 78.75" (2,000 mm)



Textile Grid

NAP4173 *Tatami*

Full repeat (L x W)
49.21" (1,250 mm) x 78.75" (2,000 mm)



Textile Grid

NAP4174 *Tweed*

Full repeat (L x W)
49.21" (1,250 mm) x 78.75" (2,000 mm)



Textile Grid

NAP4175 *Gray Felt*

Full repeat (L x W)
49.21" (1,250 mm) x 78.75" (2,000 mm)



Textile Concrete

NAP416A *Stucco*

Full repeat (L x W)
49.21" (1,250 mm) x 78.75" (2,000 mm)



Textile Concrete

NAP416B Portobello

Full repeat (L x W)
49.21" (1,250 mm) x 78.75" (2,000 mm)



Textile Concrete

NAP416C Moon

Full repeat (L x W)
49.21" (1,250 mm) x 78.75" (2,000 mm)



Textile Concrete

NAP416D *Slate Gray*

Full repeat (L x W)
49.21" (1,250 mm) x 78.75" (2,000 mm)



Textile Concrete

NAP416E Truffle

Full repeat (L x W)
49.21" (1,250 mm) x 78.75" (2,000 mm)



* NAP416B Portobello + NAP4204 Oyster Ash

Concrete

NAP4161 Mist

Full repeat (L x W)
49.21" (1,250 mm) x 78.75" (2,000 mm)



Concrete

NAP4162 Ivory Dust

Full repeat (L x W)
49.21" (1,250 mm) x 78.75" (2,000 mm)



Concrete

NAP4163 Sand Beige

Full repeat (L x W)
49.21" (1,250 mm) x 78.75" (2,000 mm)



Concrete

NAP4164 Taupe

Full repeat (L x W)
49.21" (1,250 mm) x 78.75" (2,000 mm)



Concrete

NAP4165 Anthracite

Full repeat (L x W)
49.21" (1,250 mm) x 78.75" (2,000 mm)



* NAP416B Portobello + NAP4204 Oyster Ash

European Walnut

NAP4181 Honey Walnut

Full repeat (L x W)
72.44" (1,840 mm) x 78.75" (2,000 mm)

Natural Line

The pattern design features different shades to reflect the look of hardwood floors.

36.22" (920 mm)

5.63" (143 mm)



European Walnut

NAP4182 *Natural Walnut*

Full repeat (L x W)
72.44" (1,840 mm) x 78.75" (2,000 mm)

Natural Line

36.22" (920 mm)

5.63" (143 mm)

The pattern design features different shades to reflect the look of hardwood floors.



European Walnut

NAP4183 Traditional Walnut

Full repeat (L x W)
72.44" (1,840 mm) x 78.75" (2,000 mm)

Natural Line

36.22" (920 mm)

5.63" (143 mm)

The pattern design features different shades to reflect the look of hardwood floors.



* NAP416B Portobello + NAP4204 Oyster Ash

European Walnut

NAP4184 Fawn Walnut

Full repeat (L x W)
72.44" (1,840 mm) x 78.75" (2,000 mm)

Natural Line

36.22" (920 mm)

5.63" (143 mm)

The pattern design features different shades to reflect the look of hardwood floors.



European Walnut

NAP4185 *Toasted Walnut*

Full repeat (L x W)
72.44" (1,840 mm) x 78.75" (2,000 mm)

Natural Line

36.22" (920 mm)

5.63" (143 mm)

The pattern design features different shades to reflect the look of hardwood floors.



European Walnut

NAP4186 Fumed Walnut

Full repeat (L x W)
72.44" (1,840 mm) x 78.75" (2,000 mm)

Natural Line

36.22" (920 mm)

5.63" (143 mm)

The pattern design features different shades to reflect the look of hardwood floors.



Golden Oak

NAP4191 Blonde Oak

Full repeat (L x W)
72.44" (1,840 mm) x 78.75" (2,000 mm)

Natural Line

36.22" (920 mm)

5.63" (143 mm)

The pattern design features different shades to reflect the look of hardwood floors.



Golden Oak

NAP4192 Bleached Oak

Full repeat (L x W)
72.44" (1,840 mm) x 78.75" (2,000 mm)

Natural Line

36.22" (920 mm)

5.63" (143 mm)

The pattern design features different shades to reflect the look of hardwood floors.



Golden Oak

NAP4193 Fine Oak

Full repeat (L x W)
72.44" (1,840 mm) x 78.75" (2,000 mm)

Natural Line

36.22" (920 mm)

5.63" (143 mm)

The pattern design features different shades to reflect the look of hardwood floors.



Golden Oak

NAP4194 Farmhouse Oak

Full repeat (L x W)
72.44" (1,840 mm) x 78.75" (2,000 mm)

Natural Line

36.22" (920 mm)

5.63" (143 mm)

The pattern design features different shades to reflect the look of hardwood floors.



Golden Oak

NAP4195 Smoked Oak

Full repeat (L x W)
72.44" (1,840 mm) x 78.75" (2,000 mm)

Natural Line

36.22" (920 mm)

5.63" (143 mm)

The pattern design features different shades to reflect the look of hardwood floors.



Natural Ash

NAP4201 *Limed Ash*

Full repeat (L x W)
72.44" (1,840 mm) x 78.75" (2,000 mm)

Natural Line

36.22" (920 mm)

5.63" (143 mm)

The pattern design features different shades to reflect the look of hardwood floors.



Natural Ash

NAP4202 *Oiled Ash*

Full repeat (L x W)
72.44" (1,840 mm) x 78.75" (2,000 mm)

Natural Line

36.22" (920 mm)

5.63" (143 mm)

The pattern design features different shades to reflect the look of hardwood floors.



Natural Ash

NAP4203 Champagne Ash

Full repeat (L x W)
72.44" (1,840 mm) x 78.75" (2,000 mm)

Natural Line

36.22" (920 mm)

5.63" (143 mm)

The pattern design features different shades to reflect the look of hardwood floors.



Natural Ash

NAP4204 Oyster Ash

Full repeat (L x W)
72.44" (1,840 mm) x 78.75" (2,000 mm)

Natural Line

36.22" (920 mm)

5.63" (143 mm)

The pattern design features different shades to reflect the look of hardwood floors.



* NAP416B Portobello + NAP4204 Oyster Ash

Natural Selection Plus

SPECIFICATIONS

COLLECTION NAME	Natural Selection Plus	
TOTAL # SKUs (Colors)	30 (MODERN 15 / WOOD 15)	
PRODUCT SPECIFICATIONS/CONTENT/CERTIFICATIONS	DETAILS	ADDITIONAL INFORMATION
Thickness	2 mm (0.0787")	
Wear Layer	28 mil (0.7 mm)	
Glass Fiber	Yes	
Finishing/Coating	Easy Clean	
Nominal Dimensions (inches, feet)	Width: 78"/6'6", Length: 68'	
Actual Dimensions (inches, feet, meters)	Width: 78.75"/2.00 m, Length: 68.58'/20.90 m	
Micro-Beveled	No	
Class/ASTM F1303	Type I, Grade I	
Backing Class	4-Ply Fused Backing System, Class B	
Gloss Level	5-10	
Commercial Traffic	Heavy Commercial	
Added Antimicrobial	Yes	
Recycled Contents	100% Virgin Vinyl	
Backstamp Info	None	
CE Certification	Yes	

※ All specifications are subject to change without notice.



SPECIFICATIONS

PACKING SPECIFICATIONS	DETAILS	ADDITIONAL INFORMATION
Pallet Dimensions (L x W x H)	1,120 mm x 860 mm x 2,100 mm	
Rolls per Pallet	12 Rolls	
Pallets per Container	10 Pallets (12 Rolls/Pallet)	20 foot container
Square Yard per Roll	50 sq. yd.	
Square Yard per Pallet	600 sq. yd.	
Weight per Roll (lbs.)	287.7 lbs.	
Weight per Pallet (lbs.)	3,562.6 lbs.	
Roll Wrapping Paper Type	Craft Paper with PE Foam Wrapping (PP Coating)	
TECHNICAL INFORMATION/DOCUMENTS	DETAILS	
Product Warranty	15 Years Heavy Commercial	
Installation Method	Full spread	
Approved Installation Methods	Gluedown	
Recommended Adhesive	Any approved Commercial Sheet adhesive	
Polish Required (Yes/No)	No	

※ All specifications are subject to change without notice.



SPECIFICATIONS

PRODUCT PERFORMANCE/TESTING	DETAILS	ADDITIONAL INFORMATION
ASTM D2047 Slip Resistance	> 0.65 (wet, dry)	Static coefficient of friction > 0.6 (ADA), 0.5 OSHA
ASTM F970 Static Load Limit	≥ 1,000 psi	Max 0.005"
ASTM F2753 Dynamic Rolling Load	Passes (25,000 cycles)	≤ slight surface disturbance
ASTM F1914 Residual Indentation	Passes < 8%	Average less than 8%, maximum single reading 10%
ASTM F137 Flexibility	Passes	No crack or break
ASTM F925 Chemical Resistance	Passes	No change/slight change
ASTM F1514 Resistance to Heat	Passes	$\Delta E \leq 8$
ASTM F1515 Resistance to Light	Passes	$\Delta E \leq 8$
ASTM E648 Critical Radiant Flux	Passes	> 0.45 watts/cm ² , NFPA Class I
ASTM E662 Optical Smoke Density	Passes	< 450 in flaming mode
ASTM G21 Resistance to Fungi	Passes	No Growth
AATCC 147 Antimicrobial Activity	Passes	No Growth
EN 16094 Micro Scratch Resistance	MSR - B2	

※ All specifications are subject to change without notice.



H·FLOR

Natural Selection Plus

Modern · Wood | Heterogeneous Sheet



www.lxhausys.com

For more information, Go to Website

 **LX Hausys**

Copyright © LX Hausys All rights reserved.