

Excellent AQUA MARINE

Excellent AQUA MARINE

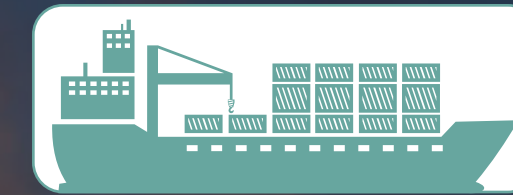


2843/2021

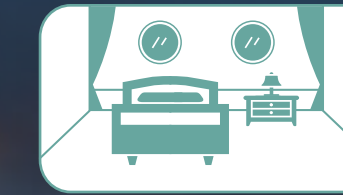
Excellent AQUA MARINE is the authentic IMO-certified flooring worldwide with new materials and superior design

Applications

The authentic marine flooring with IMO Certification as non-toxic, suitable for new materials and design.

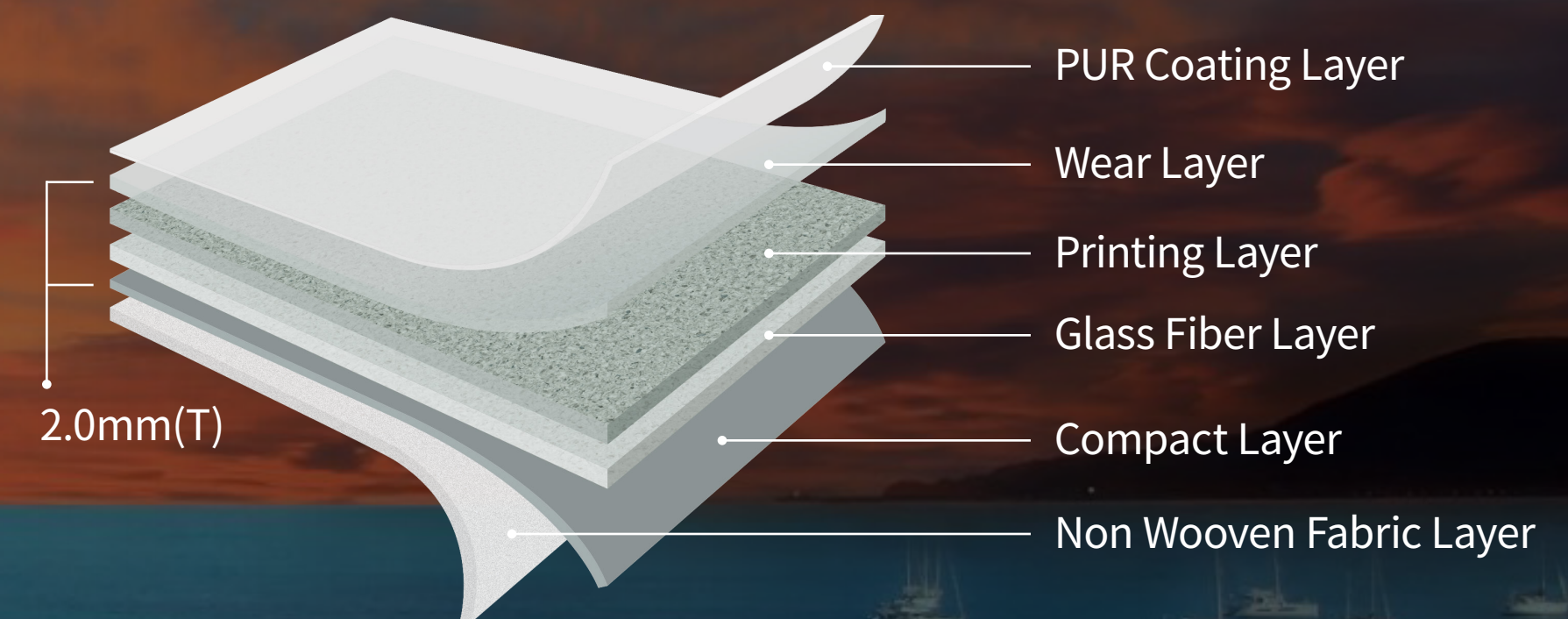


Ship and Vessel

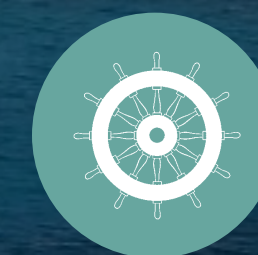


Cabin

Specification



Main features



Low smoke density and toxic gas suitable for marine use



Superior patterns and colors appropriate for both merchant vessels and cruises

Excellent AQUA MARINE

INDEX

Size : 2.0mm × 1,830mm × 27M / Roll

Bubble Marble



EAM2631-01



EAM2632-01



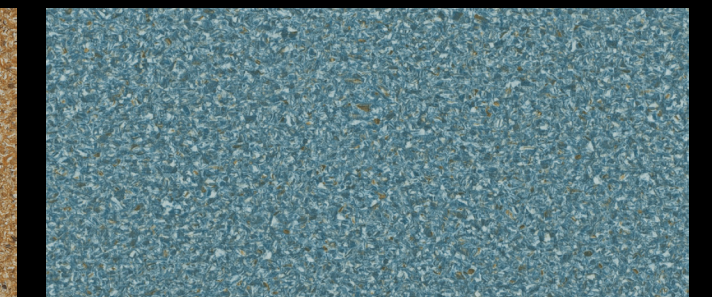
EAM2633-01



EAM2634-01



EAM2635-01



EAM2636-01

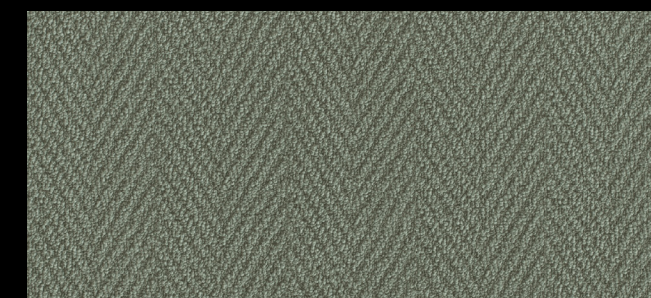
Chevron Carpet



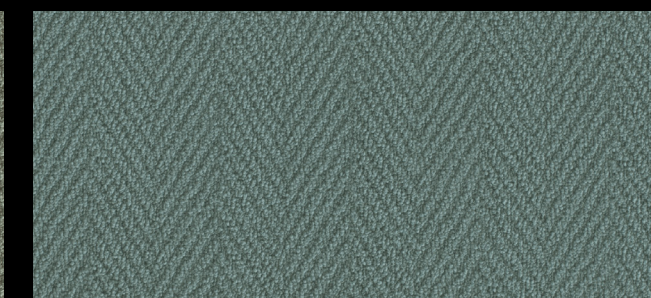
EAM9514-01



EAM9515-01

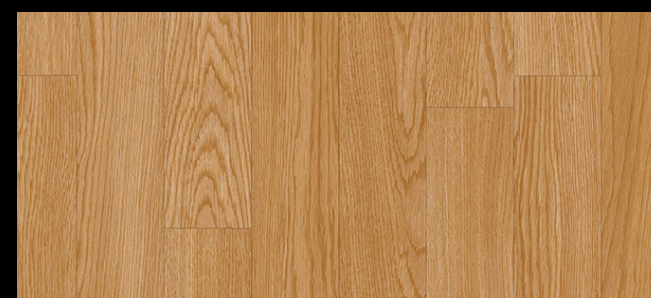


EAM9516-01

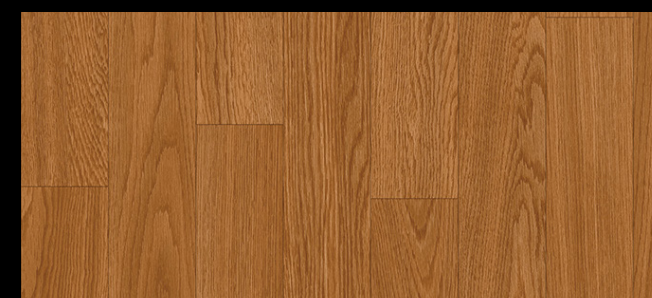


EAM9517-01

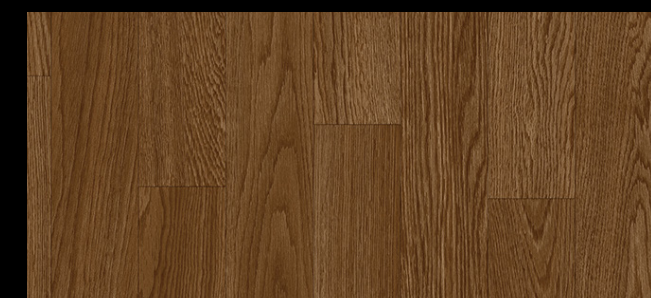
Surf Grain



EAM1451-01



EAM1822-01



EAM1821-01

Bubble Marble

EAM2631-01



EAM2632-01

EAM2633-01

EAM2634-01

EAM2635-01

EAM2636-01



Bubble Marble

EAM2631-01

EAM2632-01

EAM2633-01

EAM2634-01

EAM2635-01

EAM2636-01



Bubble Marble

EAM2631-01

EAM2632-01

EAM2633-01

EAM2634-01

EAM2635-01

EAM2636-01



Bubble Marble

EAM2631-01

EAM2632-01

EAM2633-01

EAM2634-01

EAM2635-01

EAM2636-01



Bubble Marble

EAM2631-01

EAM2633-01

EAM2634-01

EAM2635-01



Bubble Marble

EAM2631-01

EAM2632-01

EAM2633-01

EAM2634-01

EAM2635-01

EAM2636-01



Chevron Carpet

EAM9514-01



EAM9515-01

EAM9516-01

EAM9517-01



Chevron Carpet

EAM9514-01

EAM9515-01

EAM9516-01

EAM9517-01



Chevron Carpet

EAM9514-01

EAM9515-01

EAM9516-01

EAM9517-01



Chevron Carpet

EAM9514-01

EAM9515-01

EAM9516-01

EAM9517-01



Surf Grain

EAM1451-01



EAM1822-01

EAM1821-01



Surf Grain

EAM1451-01

EAM1822-01

EAM1821-01



Surf Grain

EAM1451-01

EAM1822-01

EAM1821-01



Technical Data

* N.D : Not Detected

Characteristic	Test Standard	Requirement	Result
Result of toxicity test (ppm)	CO	$\leq 1,450$	Pass
	HCN	≤ 140	N.D
	HCl	≤ 600	Pass
	HBr	≤ 600	N.D
	HF	≤ 600	N.D
	NOx	≤ 350	N.D
	SO ₂	≤ 120	N.D

Characteristic	Test Standard	Requirement	Result
Result of smoke test	2010 IMO FTP Code : part 2 Smoke and Toxicity test	Not exceed 500	Pass

Characteristic	Test Standard	Requirement	Result
Average heat for sustained burning, Qsb (MJ/m ²)	IMO RESOLUTION MSC.307(88) (2010 FTP CODE Annex 1 Part 5)	≥ 0.25	Pass
Critical flux at extinguishment, CFE (kW/m ²)		≥ 7.0	Pass
Total heat release, Qt (MJ)		≤ 2.0	Pass
Peak heat release rate, Qp (kW)		≤ 10.0	Pass
Burning droplets		Not more than 10 burning drops	None

* This criteria is for Surface Materials (Flooring coverings)



Product Specification According to KS M 3802

Characteristic	Test Standard	Unit	Result
Surface Treatment			PUR
Format			Sheet
Roll Length		m	27
Width	EN 426	mm	1,830
Thickness	EN 428	mm	2
Weight	EN 430	g/m ²	1,620
Indentation (20°C)	KS M 3802	mm	≥ 0.30
Indentation (45°C)	KS M 3802	mm	≤ 1.50
Residual Indentation Ratio	KS M 3802	%	≤ 7.0
Length Change Ratio By Heating (L/W)	KS M 3802	%	≤ 1.0
Weight Loss on Heating	KS M 3802	%	≤ 1.0
Stain Test	KS M 3802		No Change
Heavy Metal Contents (Cd, Pb, Hg, Cr VI)	Ministry of Environment Notice 2014-32		N.D
Flammability - After Flame Time	Ministry of Public Safety and Security Notice 2015-01	s	0
Flammability - Char Length		cm	≤ 10.0



Welding Rod Image Table

* Color of the below table can be different from actual product color.

Color No.	Welding No.	Color No.	Welding No.	Color No.	Welding No.	Color No.	Welding No.
EAM2631-01	WEL2631-01	EAM2634-01	WEL2634-01	EAM9514-01	WEL9514-01	EAM1451-01	EWR1451-01
EAM2632-01	WEL2632-01	EAM2635-01	WEL2635-01	EAM9515-01	WEL9515-01	EAM1821-01	EWR1821-01
EAM2633-01	WEL2633-01	EAM2636-01	WEL2636-01	EAM9516-01	WEL9516-01	EAM1822-01	EWR1822-01
				EAM9517-01	WEL9517-01		





Excellent AQUA MARINE



www.lxhausys.com

For more information, Go to Website

 **LX Hausys**

Copyright © LX Hausys All rights reserved.