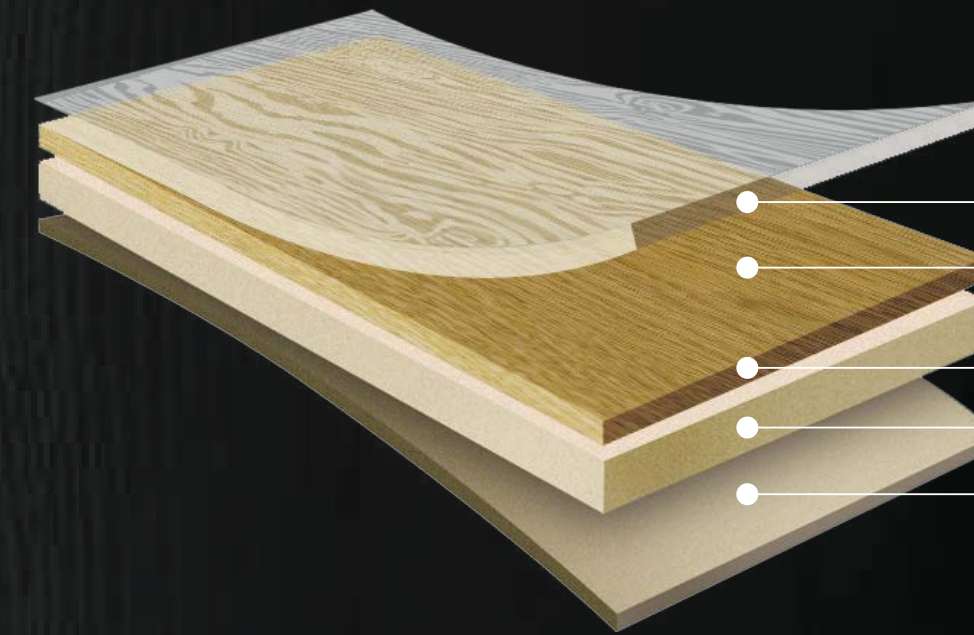


DENALI

DENALI

Basic Construction



- PUR** Surface Treatment
- Embossed In Register Wearlayer
- Printed Layer
- Base Layer
- Balance Layer

Features

Eco & Human-friendly Product

- FloorScore® and DIBt certified for low VOCs
- Phthalate Free(DEHP·DBP·BBP·DIDP·DINP·DNOP)
& Heavy Metal Free(Cd·Pb·Hg·Cr6+)
- Made from safer, stronger 100% virgin raw materials

Excellence in Design

- High-resolution imaging and patterns for realistic wood visuals
- New tile visuals that mirror woven patterns

Durable Technology

- PUR double coating improves resistance to scratches and stains
- Quality assured by warranties

Excellent resistance to water

DecoTile has a strong resistance against water.
(No swelling, no distortion)



DENALI

Continuous Embossed In register “C-EIR”

The authentic texture of wood and ceramic materials are generated by applying LG Hausys' continuous embossed in register technique, and through LG's random dye-cut system, diverse patterns and rich textures are beautifully expressed.

C-EIR

: Continuous Embossed in Register

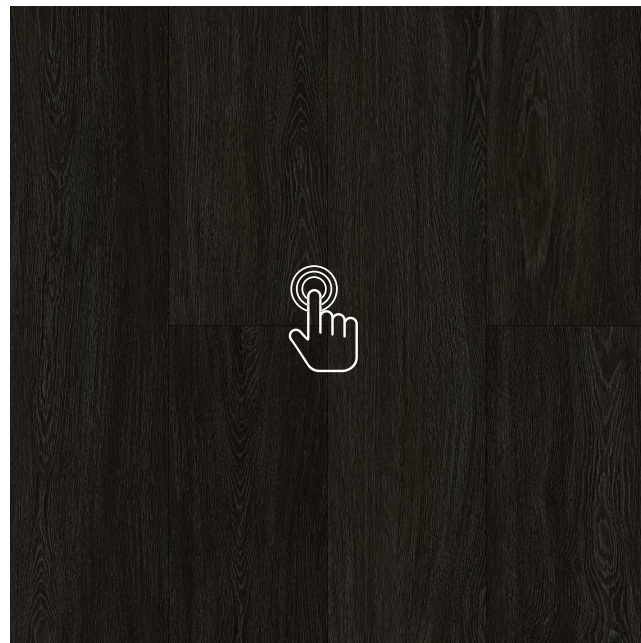
A technique that realistically expresses the texture of natural materials by matching the prints and surface embossing continuously and reducing repetitiveness.



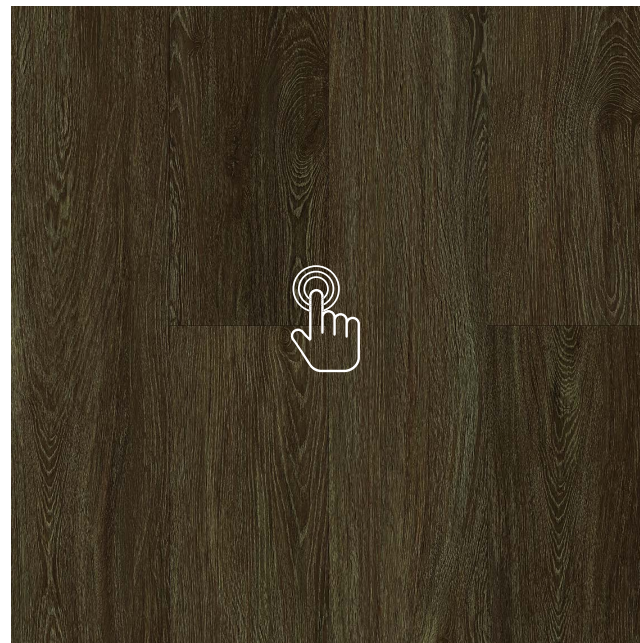
DENALI CONTENTS

※ Colors can be different from samples/index. Please check the actual product.
※ Applying the natural characters of woods/stones with diverse colors and visuals.

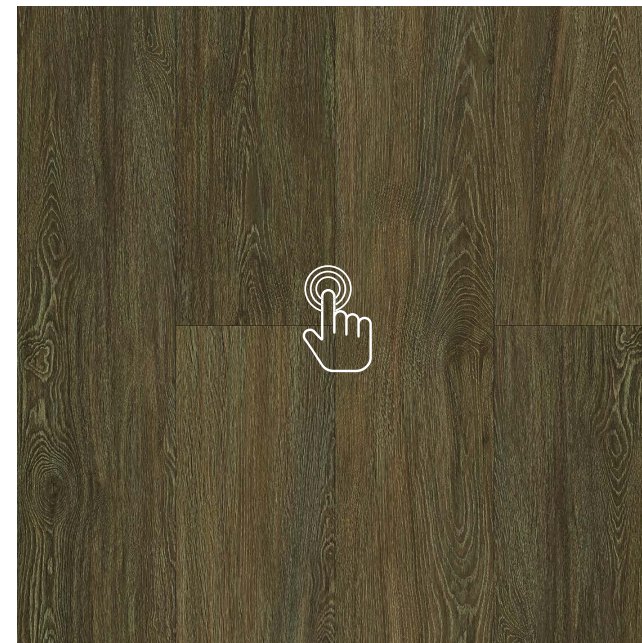
PLANK



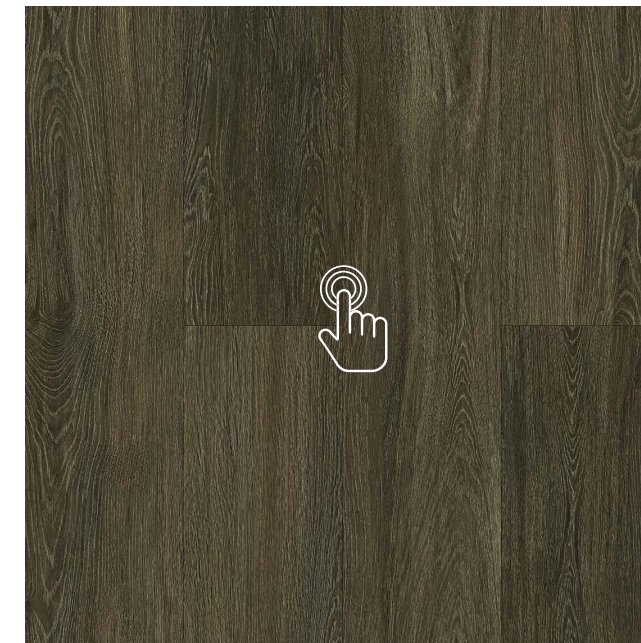
7935
ASSIER



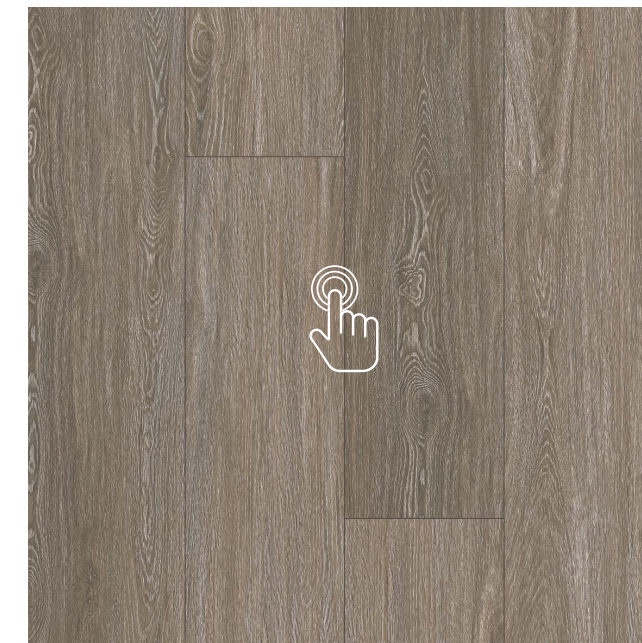
7934
AVERSLEY



7933
BIRNHAM



7932
BRAMPTON

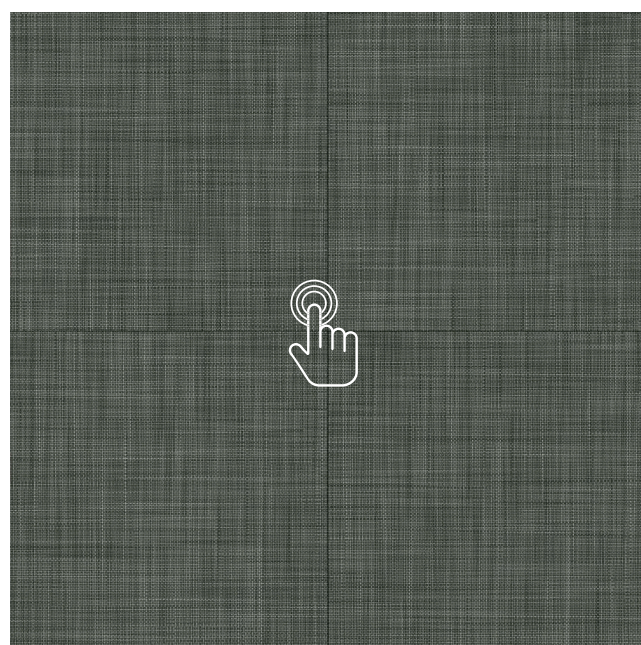


7915
ADDINGTON

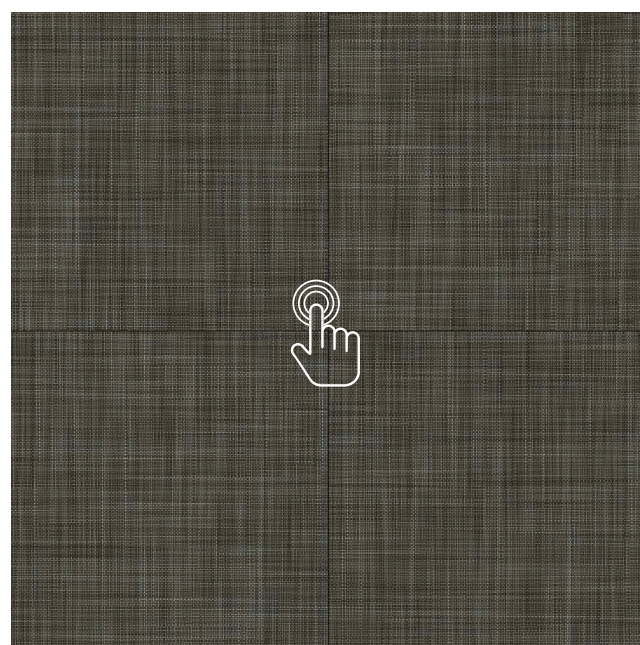


7916
ASHRIDGE PLANK

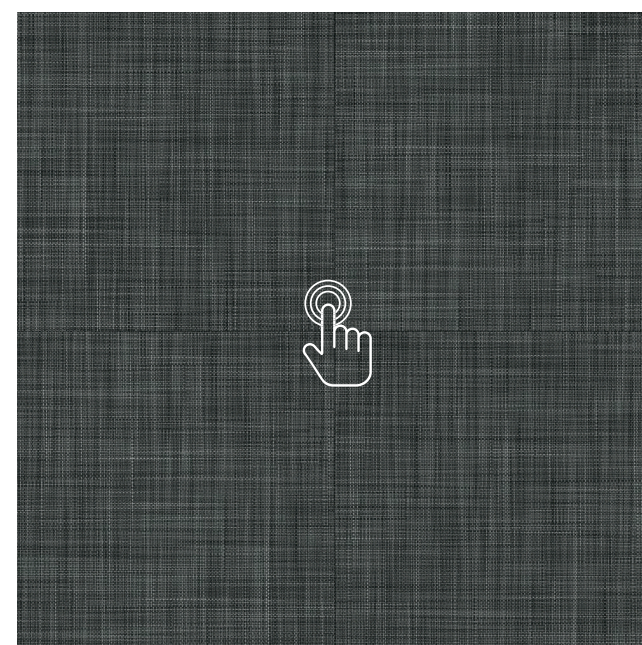
TILE



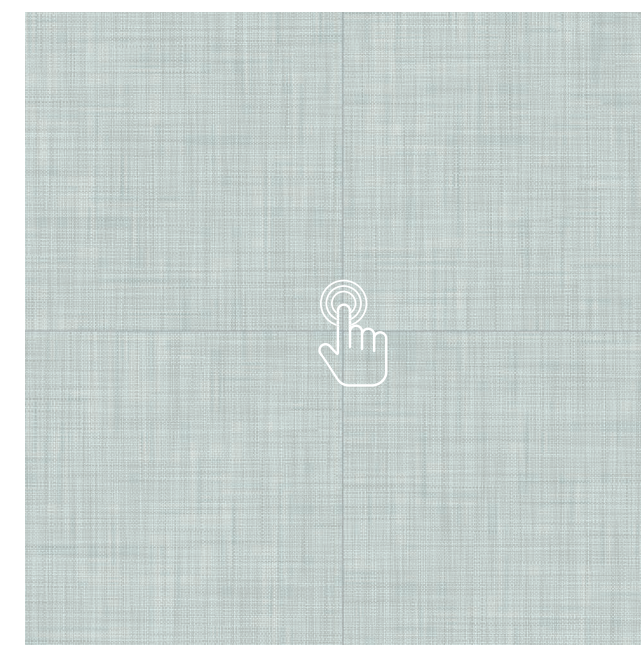
6471
DARK METTALIC



6472
TAFEEE



6473
DARK MIST

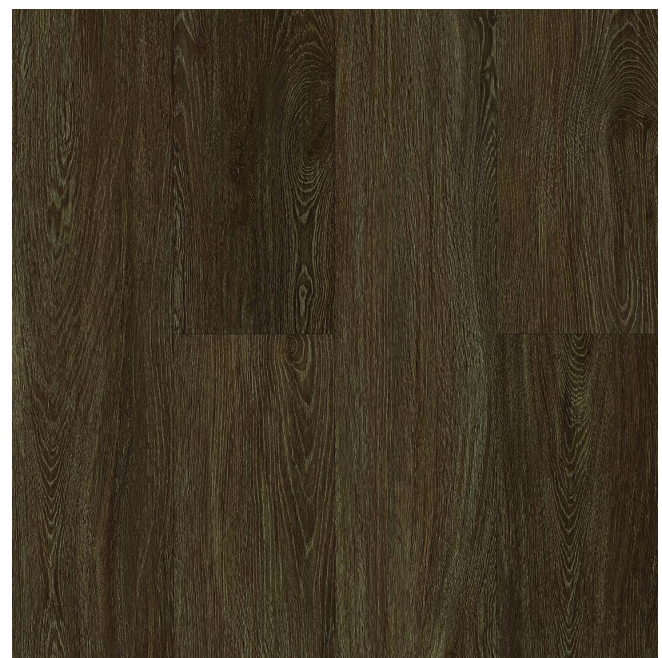


6474
SWEET FERN

PLANK



7935
ASSIER



7934
AVERSLEY



7933
BIRNHAM



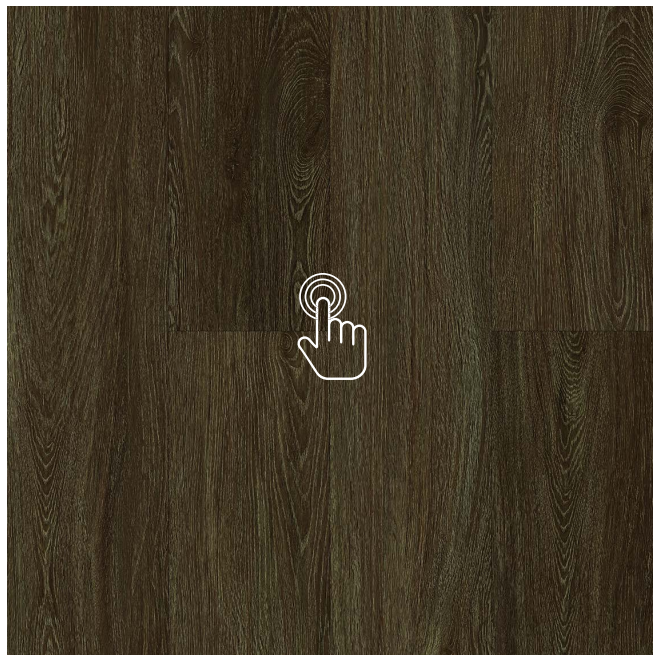
7935 / ASSIER

PLANK

7935
ASSIER



7934
AVERSLEY



7933
BIRNHAM



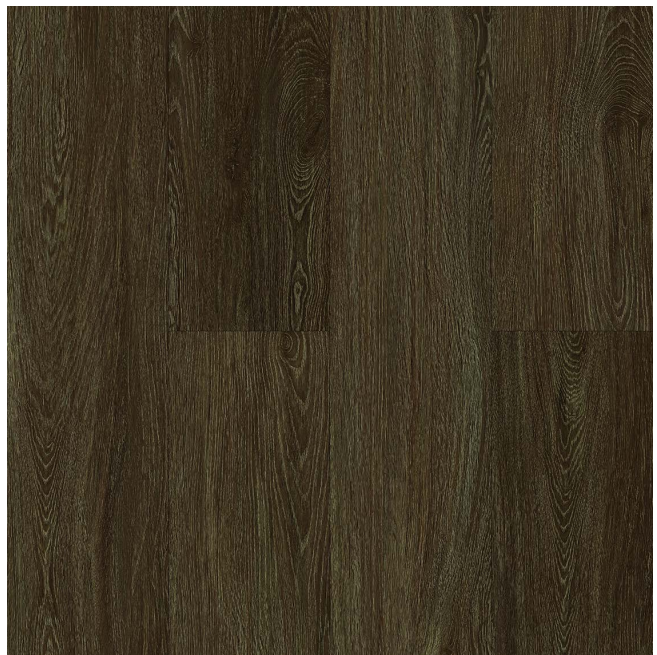
7934 / AVERSLEY

PLANK

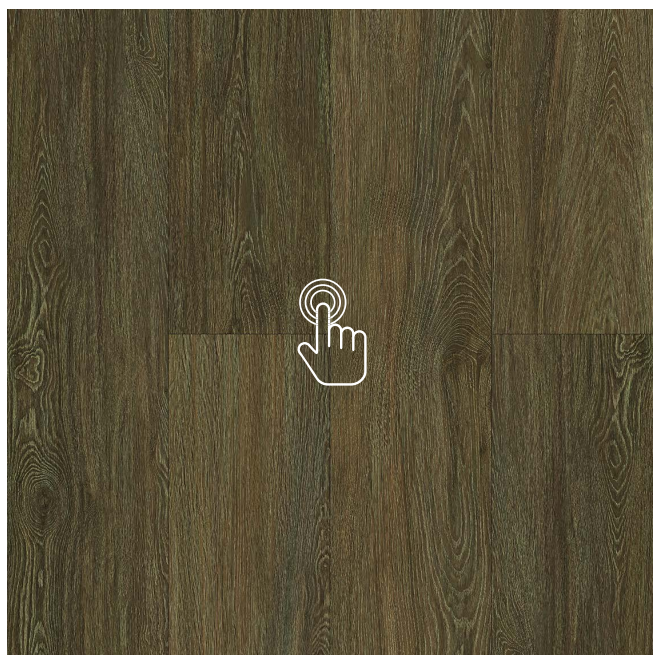
7935
ASSIER



7934
AVERSLEY



7933
BIRNHAM



7933 / BIRNHAM

PLANK



7916
ASHRIDGE
PLANK



7932
BRAMPTON



7915
ADDINGTON

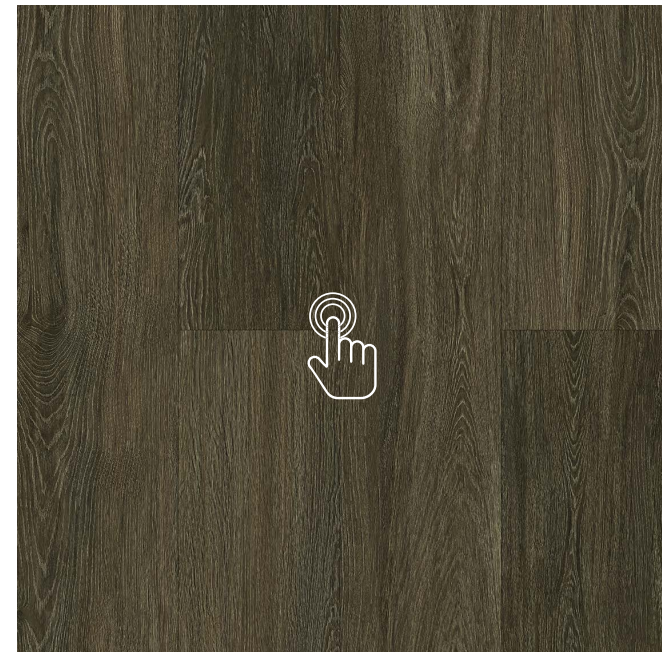


7916 / ASHRIDGE PLANK

PLANK



7916
ASHRIDGE
PLANK



7932
BRAMPTON



7915
ADDINGTON



7932 / BRAMPTON

PLANK

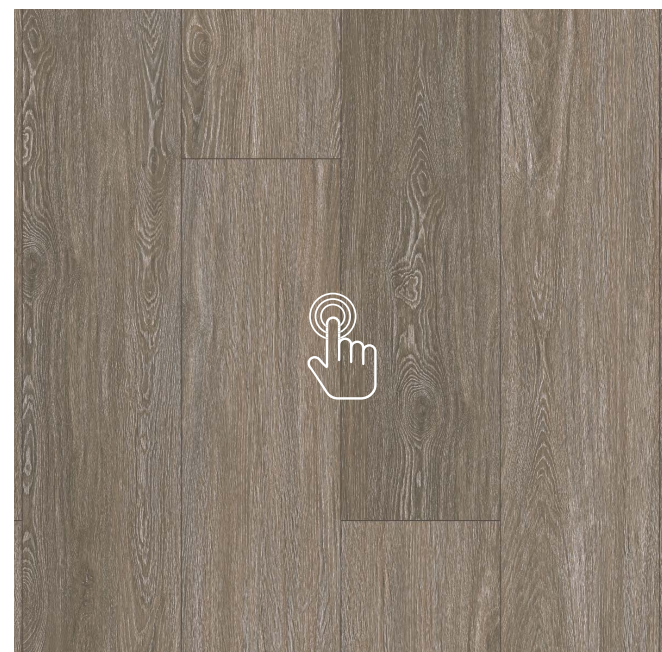
7916
ASHRIDGE
PLANK



7932
BRAMPTON

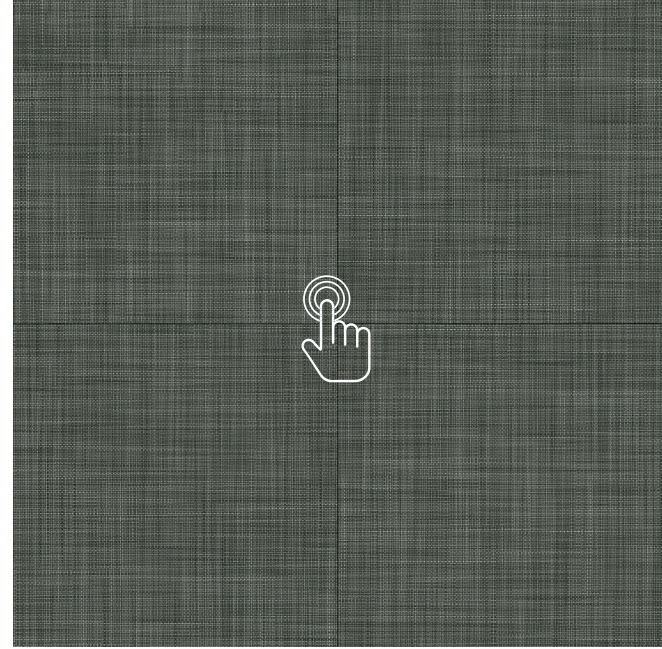


7915
ADDINGTON



7915 / ADDINGTON

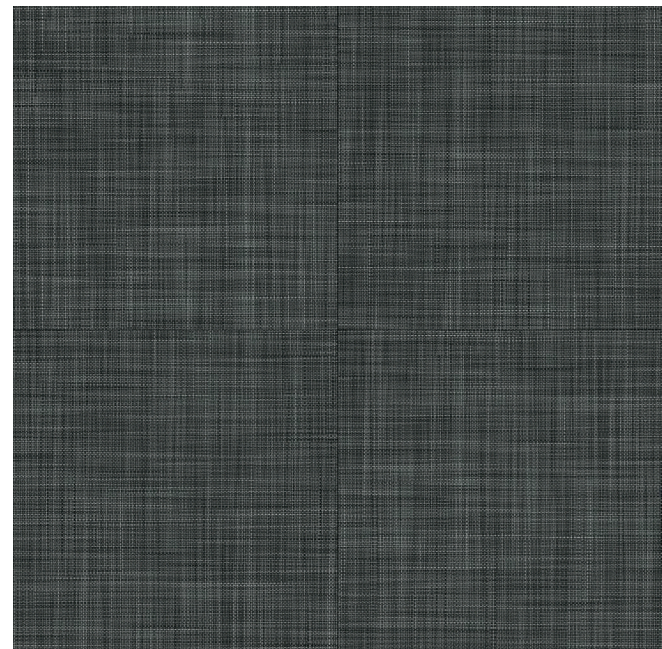
TILE



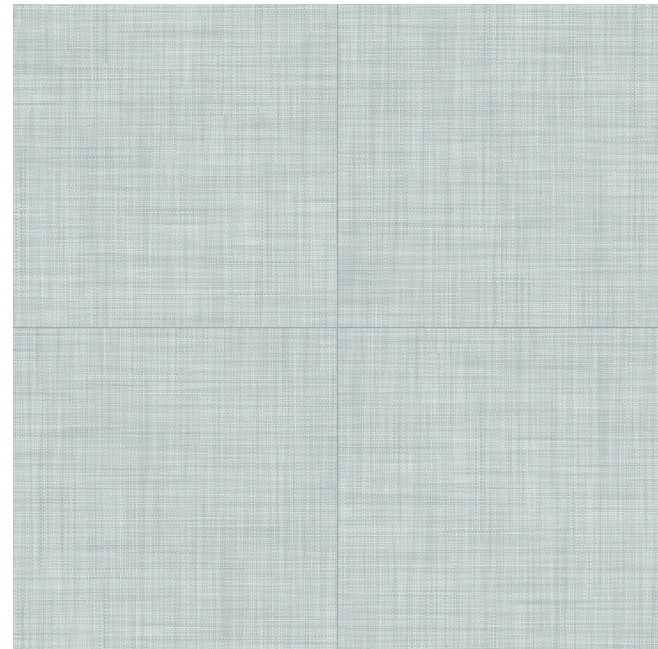
6471 DARK METTALIC



6472 TAFFEE



6473 DARK MIST

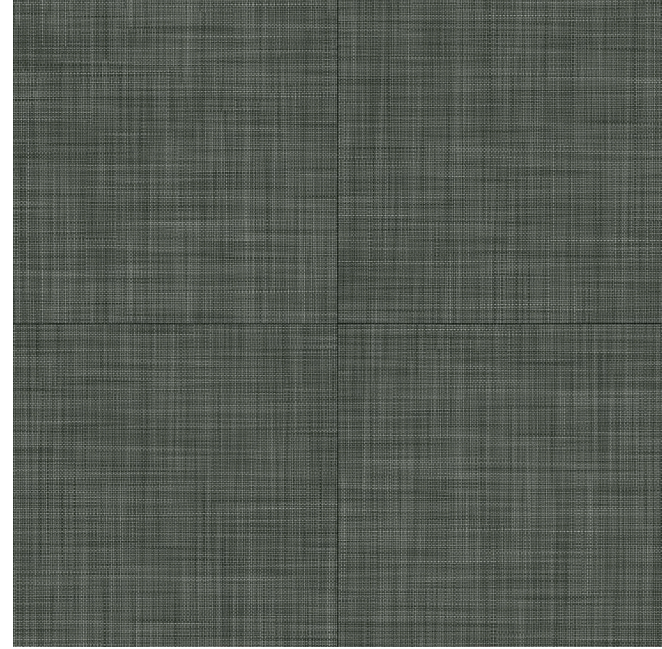


6474 SWEET FERN

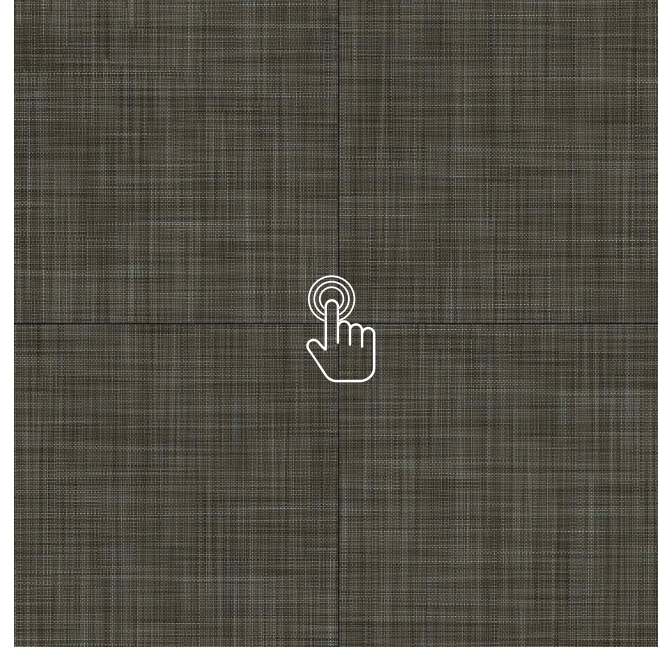


6471 / DARK METTALIC

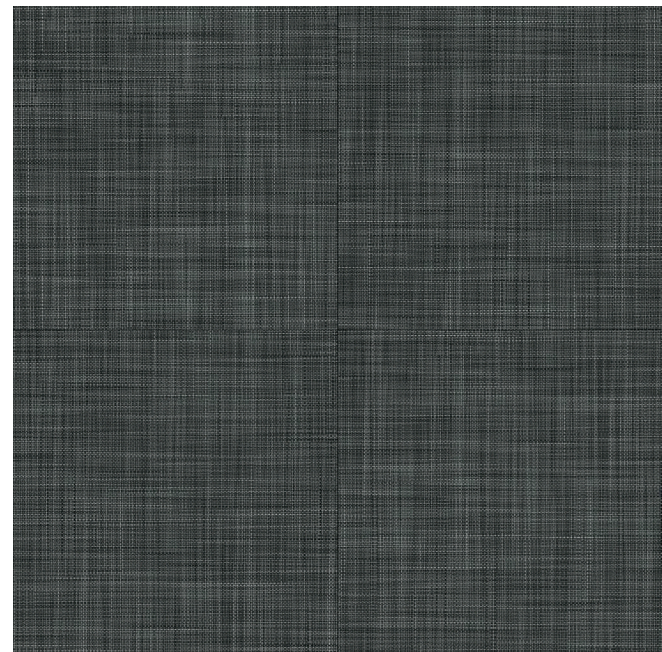
TILE



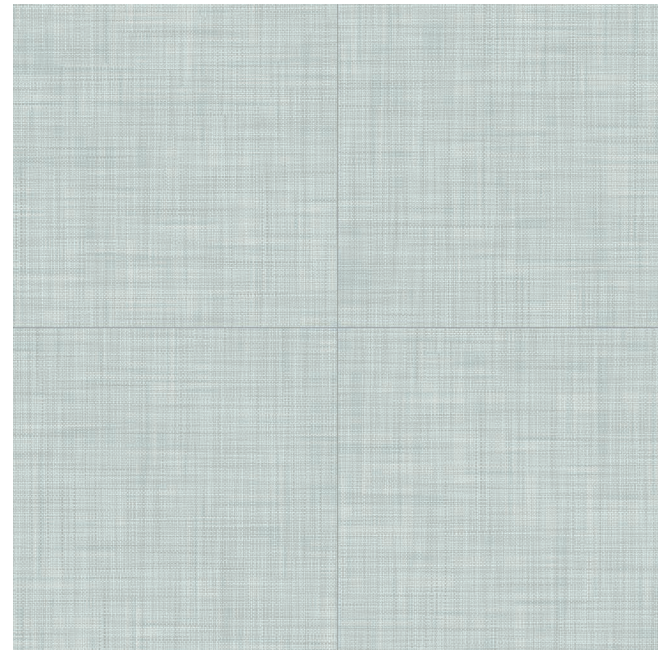
6471 DARK METTALIC



6472 TAFFEE



6473 DARK MIST

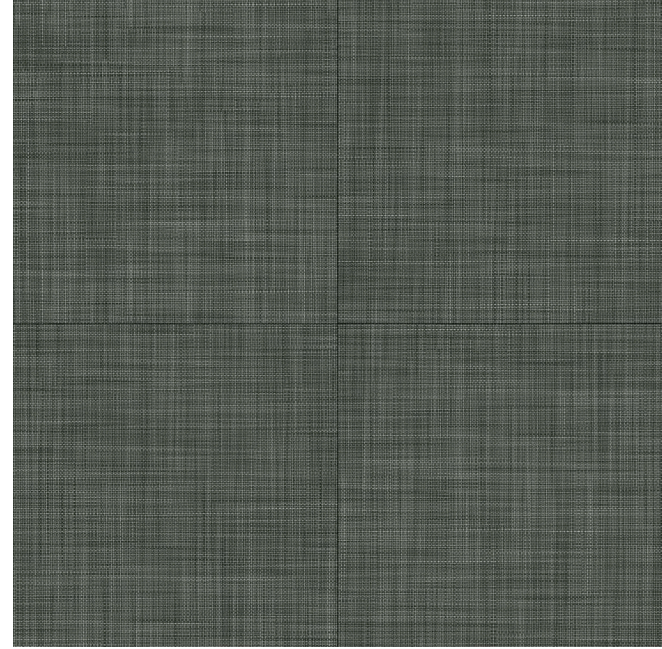


6474 SWEET FERN



6472 / TAFFEE

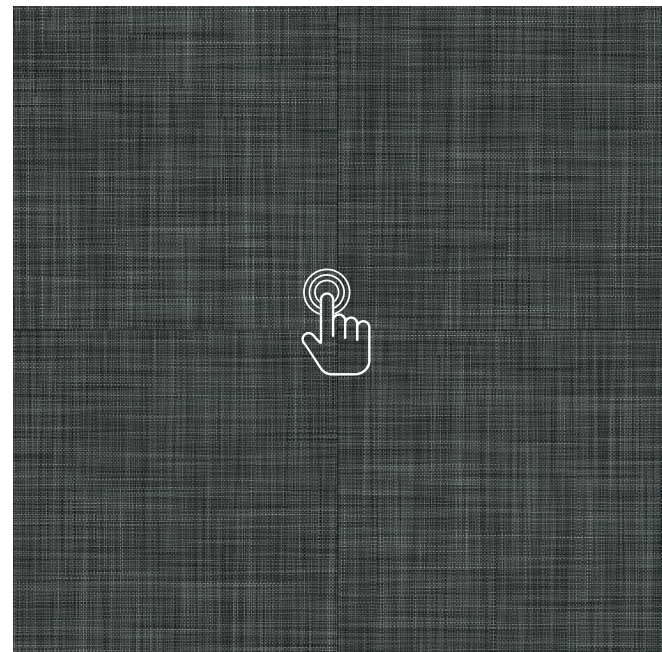
TILE



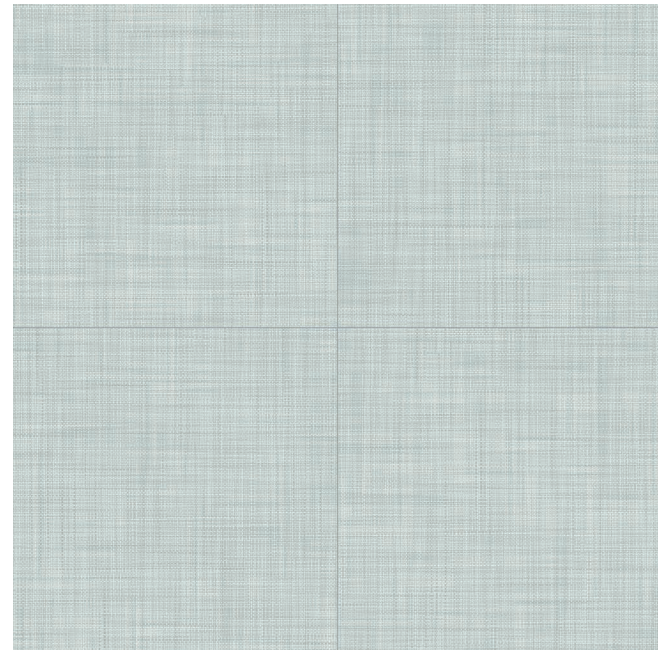
6471 DARK METTALIC



6472 TAFFEE



6473 DARK MIST

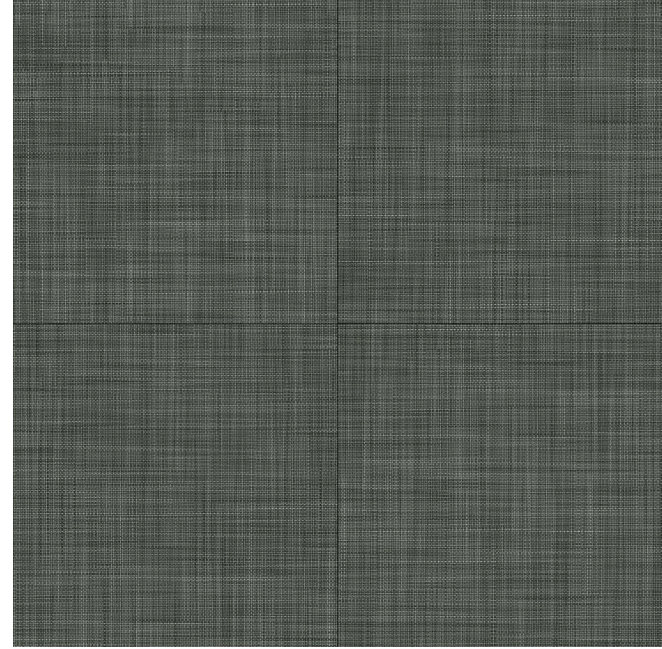


6474 SWEET FERN



6473 / DARK MIST

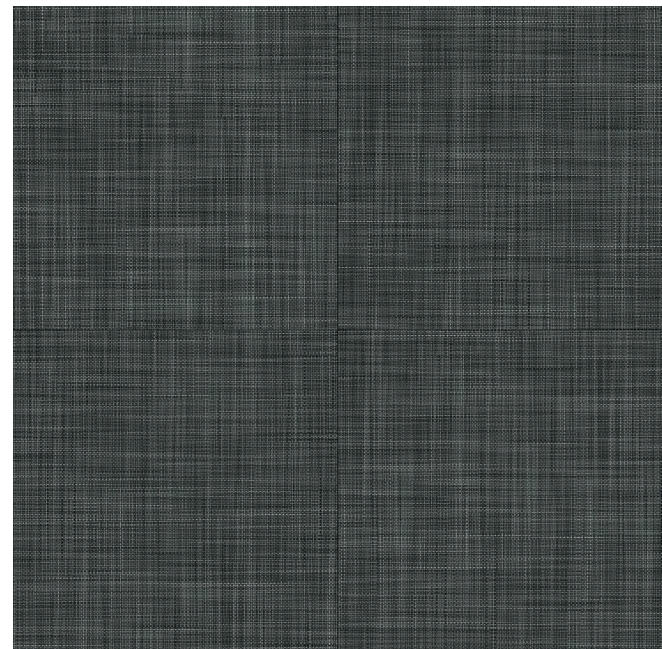
TILE



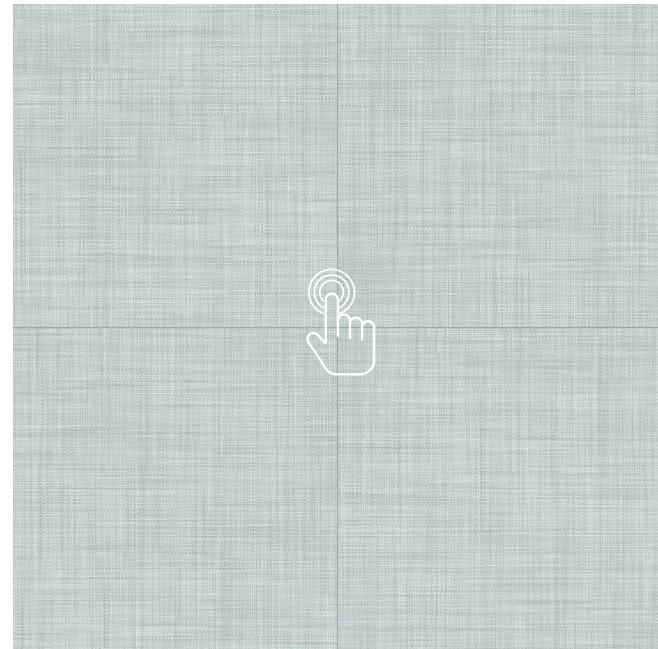
6471 DARK METTALIC



6472 TAFFEE



6473 DARK MIST



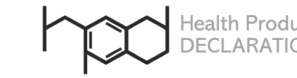
6474 SWEET FERN



6474 / SWEET FERN

LX HAUSYS Floors 3.0mm/20mil Dryback Specification

TECHNICAL DATA



COLLECTION NAME	Denali	
SELLING STYLE #(s)	Denali	
TOTAL # SKU'S(COLORS)	10 (Plank 6, Tile 4)	
PRODUCT SPECIFICATIONS / CONTENT / CERTIFICATIONS	DETAILS	ADDITIONAL INFORMATION
Thickness	3.0mm (0.118 in)	
Wear Layer	20mil (0.5mm)	
Glass Fiber	No	
Finishing / Coating	Enhanced UV Urethane Coating	
Nominal Dimensions (inches)	Plank(8" x 48"), Tile(24" x 24")	
Actual Dimensions (inches & mm)	Plank(203.2mm x 1219.2mm), Tile(600mm x 600mm)	
Micro-Beveled	No	
Class / ASTM F1700	Class III Printed Film vinyl tile - Type B(embossed)	
Backing Class	Commercial Grade	
Gloss Level	5~12	
Commercial Traffic	Heavy Commercial	
Added Antimicrobial	No	
Recycled Contents	100% Virgin Vinyl	
Backstamp info	None	
CE Certification	Yes	



LX HAUSYS Floors 3.0mm/20mil Dryback Specification

TECHNICAL DATA



PACKING SPEC'S	DETAILS		ADDITIONAL INFORMATION
	Plank(8"x 48")	Tile(24" x 24")	
Pallet Dimensions (L x W x H)	1,260 x 1,110 x 148 (mm)	640 x 1,280 x 148 (mm)	
Square feet per plank/tile [formula field]	2.667	3.875	
Square feet per carton	34.667	54.250	
Square feet per pallet	2,426.667	1,627.503	
Square feet per container [formula field]	38,826.665	29,295.057	20 foot container
Weight per sq ft(lbs) [formula field]	1.168	1.168	
Weight per plank/tile (lbs/plank)	3.114	4.524	
Weight per carton (lbs)	40.477	63.343	
Weight per pallet (lbs)	2,833.384	1,900.278	
Weight per container (lbs)	45,334.139	34,205.003	
Pieces per box	13	14	
Boxes per pallet	70	30	
Box Type			
Pallet per container	16	18	
Boxes per container [formual field]	1120	540	

LX HAUSYS Floors 3.0mm/20mil Dryback Specification

TECHNICAL DATA



PRODUCT PERFORMANCE / TESTING	PERFORMANCE	ASTM REQUIREMENT
ASTM F2055 Size and Tolerance	Passes	As speicfied 0.016 in./lin.ft
ASTM F386 Thickness	Passes	As speicfied 0.005 in./lin.ft
ASTM F2055 Squareness	Passes	Max. 0.010 in.
ASTM F1914 Residual Indentation	Passes	Avg. < 8%
ASTM F137 Flexibility	Passes 6mm mandrel	1 in (25.4mm) mandrel / no crack or break
ASTM F2199 Dimension Stability	Passes	< 0.020in./ft
ASTM F925 Chemical Resistance	Passes	No change/Slight change
ASTM F1514 Resistance to Heat	Passes	< 8 (delta E) avg.
ASTM F1515 Resistance to Light	Passes	< 8 (delta E) avg.
ASTM E648 Critical Radiant Flux	Class 1	Class 1 (< 0.45 W/cm²)
ASTM E662 Optical Smoke Density	Passes	< 450
ASTM C1028 Slip Resistance	Passes	ADA Compliant(> 0.50)
ASTM F970 Static Load	1000 psi	250 psi(< 0.005")
TECHNICAL INFORMATION / DOCUMENTS	DETAILS	ADDITIONAL INFORMATION
Product Warranty	10 years for Commercial	
Installation Method	Full spread	
Approved Installation Methods	Above, Below, and On-Grade	
Recommended Adhesive(s)	Any approved LVT adhesive	
Polished Required (Y/N)	None	



DENALI



www.lxhausys.com

For more information, Go to Website

 **LX Hausys**

Copyright © LX Hausys All rights reserved.